

# The Economic Importance of Food and Fiber

## A Spotlight on Evans County, Georgia

Prepared for:  
Evans County Cooperative Extension

Prepared by:



Center for Agribusiness  
and Economic Development  
*College of Agricultural & Environmental Sciences*  
UNIVERSITY OF GEORGIA

June 2017

# Agriculture in Georgia

---

- Georgia's 2015 Farm Gate Value was \$13.8 billion. Adding the value of \$2.2 billion of landscape services increased the total agricultural production value to \$16.0 billion.
- Total food and fiber production and directly related businesses account for a \$74.9 billion *output contribution* to Georgia's \$917.6 billion economy.



# What We Know about Evans County

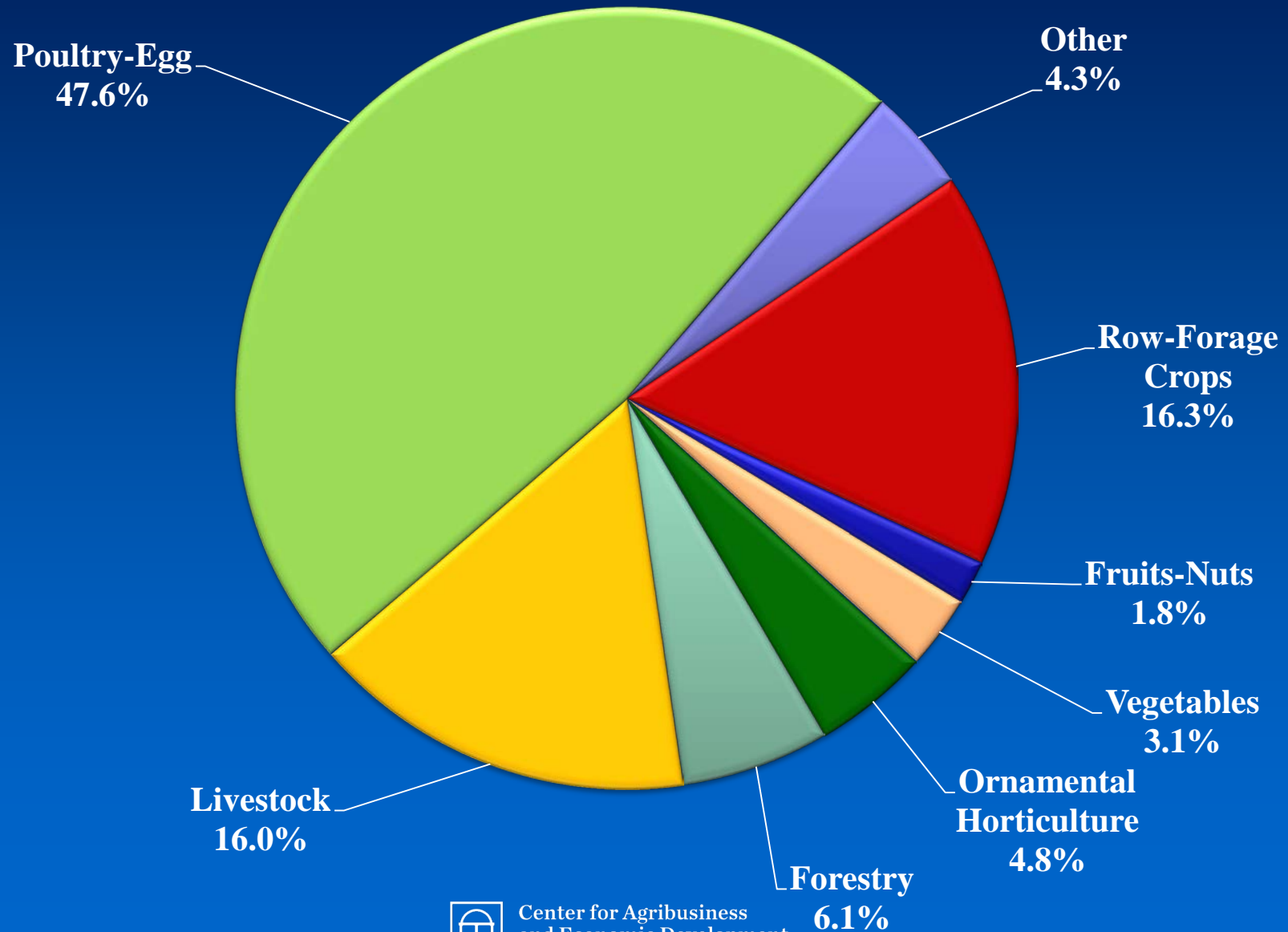
---

- 2015 Farm Gate Value in Evans Co. was \$40.3 million. Adding \$966.2 thousand of landscape services increased the total agricultural production value to \$41.2 million.
- The highest value commodity group was poultry and egg production, representing 47.6% of the total agricultural production value.



# Evans County

## 2015 Farm Gate Production Value



# Examining the Contribution

## County Economy Modeled

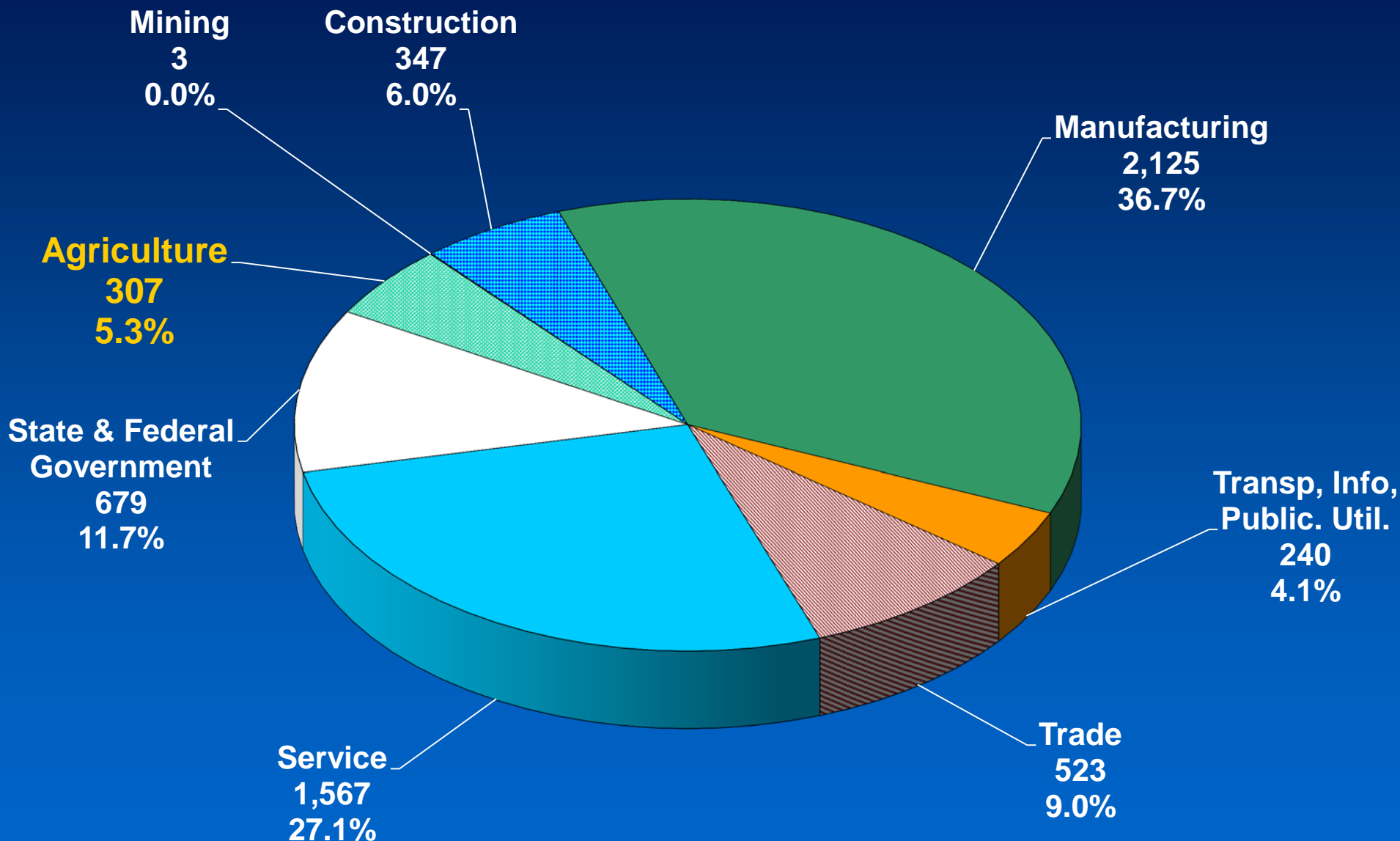
- The Center for Agribusiness and Economic Development performed an analysis of the county's economy, focusing on the role of food and fiber.
- How much of the county's total current economic output comes from food and fiber production and directly related processing? (A Snapshot of the Economy)
- What is the total (direct and indirect) *Economic Contribution* of food and fiber production and directly related industries?





# Evans County Employment

Total County Employment = 5,791



# An Economic Snapshot of Evans County

---

- How much of Evans County's total economic output comes from food and fiber production?
- AG value alone of \$41.2 million-consisting of Farm Gate Value and landscape services comprises 4.2% of the county's economy.
- AG plus directly related businesses (ex. Ag Support Services, Processing, etc.) comprise 54.7% of the county's economy.



# What is the Economic Contribution?

---

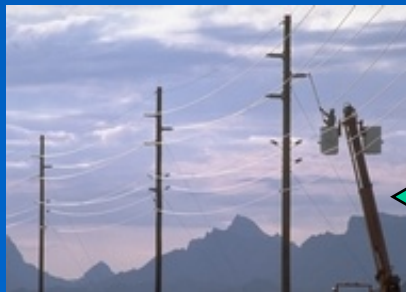
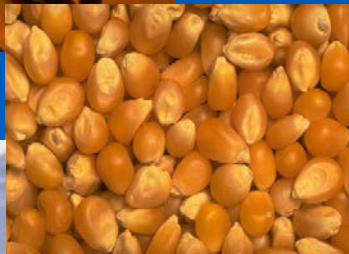
- What is the total (direct and indirect) *contribution* of food and fiber production and directly related industries?
- This scenario illustrates how other industries are affected by the presence of food and fiber in the county. The indirect contribution measures output created due to food and fiber production and processing in the county.





# What Economic Contribution Means: A Brief Explanation

- The *contribution* numbers capture the ripple effects that food and fiber create in the county's economy. Many other sectors rely in part on the existence of food and fiber for sales.
- Further, agricultural commodities are sold to other sectors as the inputs to production.



# Evans County

## Agriculture *Economic Contribution*

| Sector                                   | Direct       | Total        |
|--|--------------|--------------|
| <b>Ag + Landscape Services</b>           | \$41,238,841 | \$41,238,841 |
| Mining                                   | \$0          | \$1,747      |
| Utilities                                | \$0          | \$209,634    |
| Construction                             | \$0          | \$310,764    |
| Manufacturing                            | \$0          | \$19,921     |
| Wholesale Trade                          | \$0          | \$448,251    |
| Retail trade                             | \$0          | \$850,280    |
| Transportation & Warehousing             | \$0          | \$425,500    |
| Information                              | \$0          | \$101,988    |
| Finance & insurance                      | \$0          | \$821,901    |
| Real estate & rental                     | \$0          | \$1,719,424  |
| Professional- scientific & tech services | \$0          | \$214,207    |
| Management of companies                  | \$0          | \$0          |
| Administrative & waste services          | \$0          | \$91,047     |
| Educational services                     | \$0          | \$110,449    |
| Health & social services                 | \$0          | \$1,439,728  |
| Arts-entertainment & recreation          | \$0          | \$6,901      |
| Accommodation & food services            | \$0          | \$417,804    |
| Other services                           | \$0          | \$339,912    |
| Government & non NAICS                   | \$0          | \$33,096     |
| <b>TOTAL</b>                             | \$41,238,841 | \$48,801,395 |

**Total  
Contribution  
of Production  
AG = \$48.8  
million  
5.0% of total  
economy**

# Evans County

## Production Agriculture + Directly Related Industries Contribution

| Sector                                   | Direct        | Total         |
|--|---------------|---------------|
| <b>Ag + Related Industries</b>           | \$531,173,089 | \$531,173,089 |
| Mining                                   | \$0           | \$9,602       |
| Utilities                                | \$0           | \$2,763,315   |
| Construction                             | \$0           | \$2,530,436   |
| Other Manufacturing                      | \$0           | \$167,596     |
| Wholesale Trade                          | \$0           | \$3,824,993   |
| Retail trade                             | \$0           | \$5,351,711   |
| Transportation & Warehousing             | \$0           | \$10,037,908  |
| Information                              | \$0           | \$1,227,867   |
| Finance & insurance                      | \$0           | \$7,166,699   |
| Real estate & rental                     | \$0           | \$9,269,530   |
| Professional- scientific & tech services | \$0           | \$2,111,856   |
| Management of companies                  | \$0           | \$0           |
| Administrative & waste services          | \$0           | \$1,499,720   |
| Educational svcs                         | \$0           | \$538,581     |
| Health & social services                 | \$0           | \$7,569,263   |
| Arts- entertainment & recreation         | \$0           | \$148,876     |
| Accommodation & food services            | \$0           | \$2,959,167   |
| Other services                           | \$0           | \$2,645,387   |
| Government & non NAICS                   | \$0           | \$458,899     |
| <b>Total</b>                             | \$531,173,089 | \$591,454,496 |

**Total  
Contribution  
of AG +  
Related =  
\$591.5 million  
60.9% of total  
economy**

# Evans County

## Production Agriculture + Directly Related Industries Employment *Contribution*

| Sector                                   | Direct | Total |
|--|--------|-------|
| <b>Ag + Related Industries</b>           | 2,123  | 2,123 |
| Mining                                   | 0      | 0     |
| Utilities                                | 0      | 2     |
| Construction                             | 0      | 17    |
| Manufacturing                            | 0      | 1     |
| Wholesale Trade                          | 0      | 22    |
| Retail trade                             | 0      | 75    |
| Transportation & Warehousing             | 0      | 91    |
| Information                              | 0      | 5     |
| Finance & insurance                      | 0      | 37    |
| Real estate & rental                     | 0      | 4     |
| Professional- scientific & tech services | 0      | 32    |
| Management of companies                  | 0      | 0     |
| Administrative & waste services          | 0      | 50    |
| Educational svcs                         | 0      | 11    |
| Health & social services                 | 0      | 93    |
| Arts- entertainment & recreation         | 0      | 8     |
| Accommodation & food services            | 0      | 43    |
| Other services                           | 0      | 42    |
| Government & non NAICS                   | 0      | 6     |
| <b>Total</b>                             | 2,123  | 2,660 |

Total  
Contribution  
of AG + Related  
Employment =  
2,660  
Accounts for  
45.9% of  
employment

# What These Numbers Mean: A Brief Explanation

---

- ***Direct contribution*** is \$531.2 million. This includes food and fiber production, processing and directly related manufacturing.
- ***Total contribution*** includes related sectors and sums to \$591.5 million. This includes the captured effects of farmers (direct source) buying supplies (seed, fertilizer, work boots) from local stores. These stores must increase their output to meet farmer demand.



# What These Numbers Mean: A Brief Explanation (continued)

---

- As local stores increase their output, they may demand more stock from local wholesalers (also in the Trade sector). Local wholesalers demand more from local manufacturers, thus increasing activity in the Manufacturing sector.
- Local stores also hire employees to assist farmers. They take home wages and buy groceries at the local store which increases demand there.





# Evans County Food and Fiber Summary

---

- The total *economic contribution* of food and fiber production, processing and direct manufacturing is \$591.5 million.
- The total county *output* is \$970.8 million.
- Thus, food and fiber (directly and indirectly) account for 60.9% of the total county output, considering the multiplier effects from direct and related industries.



# Contact Information

---

Prepared by

Sharon P. Kane, Sr. Public Service Associate, Economist

Center for Agribusiness & Economic Development

Dr. Kent Wolfe, Director

*“Adding Value to Georgia's Agricultural Economy  
Through Research and Extension”*

*Check our website for more resources:*

*[www.caed.uga.edu](http://www.caed.uga.edu)*



Center for Agribusiness  
and Economic Development  
*College of Agricultural & Environmental Sciences*  
UNIVERSITY OF GEORGIA