

Lamar County Community Profile



Photo: Keith Hair

**160th in order of
county creation
November 2, 1920**

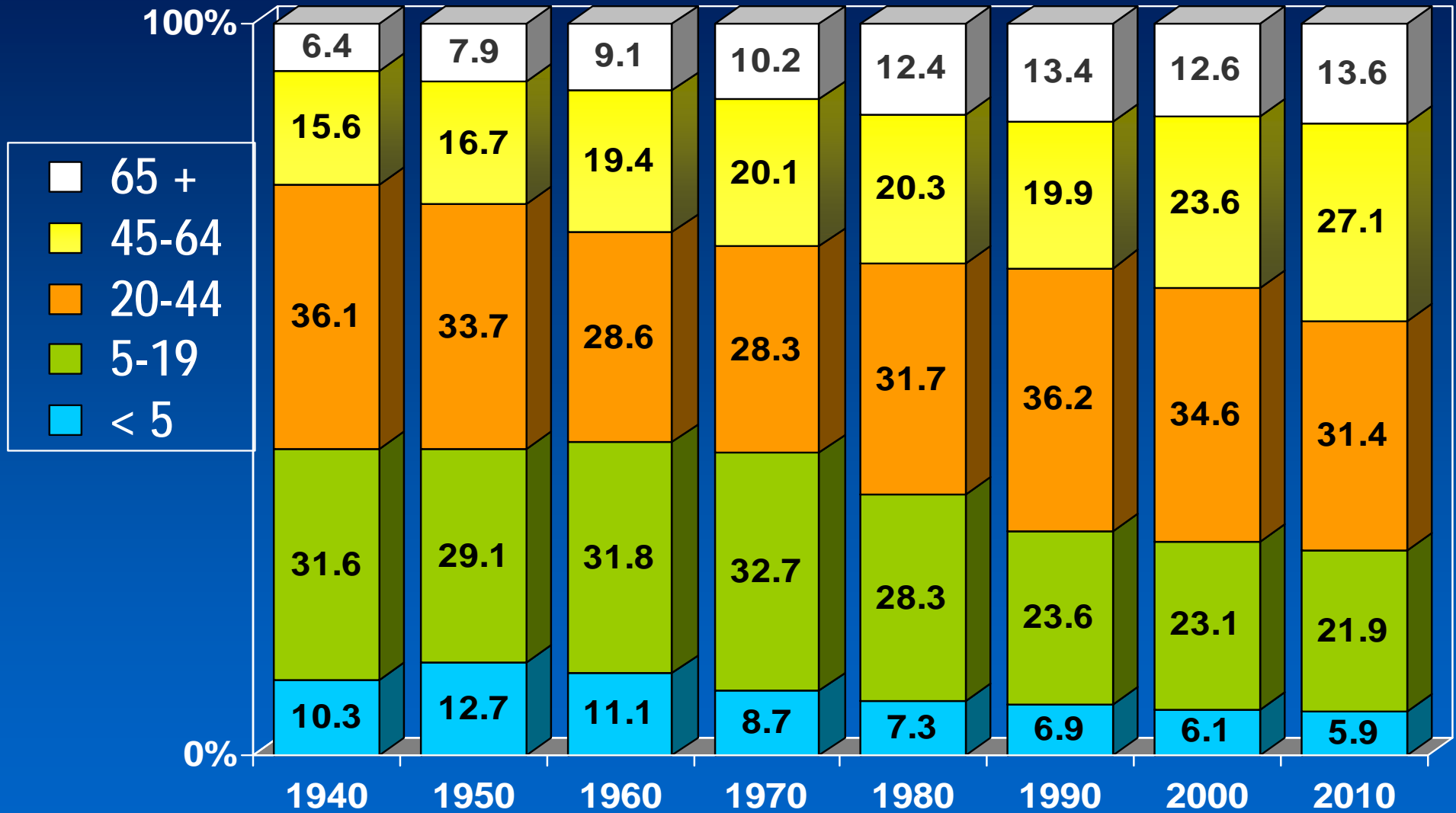
**Prepared for Lamar County Cooperative Extension
by the Center for Agribusiness and Economic Development
The University of Georgia • Athens, GA**

Lamar County Total Population



Primary data sources: U.S. Census Bureau, decennial censuses and estimates; GA Office of Planning & Budget projections (2012 series).

Population Composition by Age Lamar County

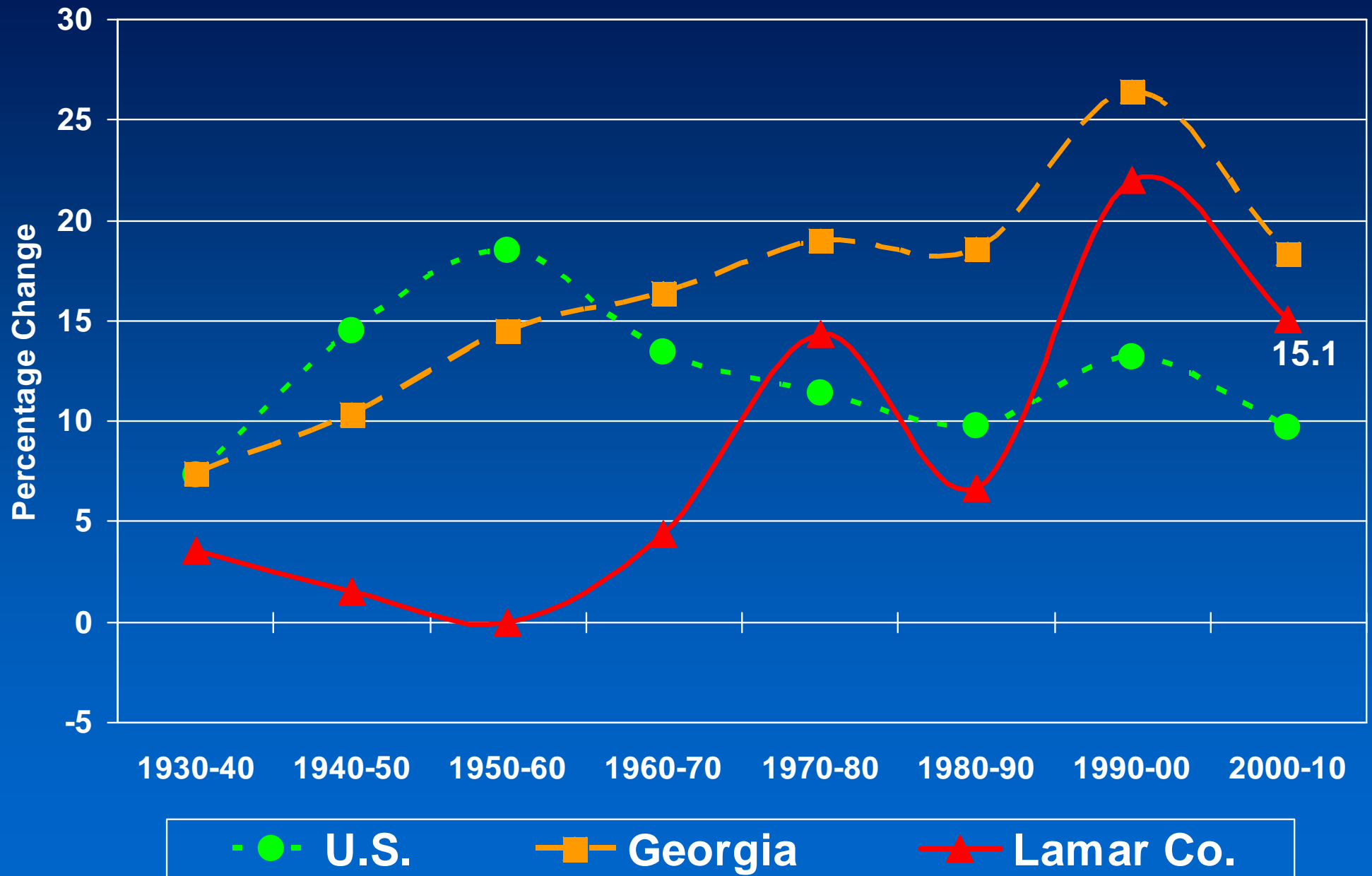


2013 Median Age Lamar Co. = 38.2 yrs. GA = 35.9 yrs.

2014 County Population Comparisons

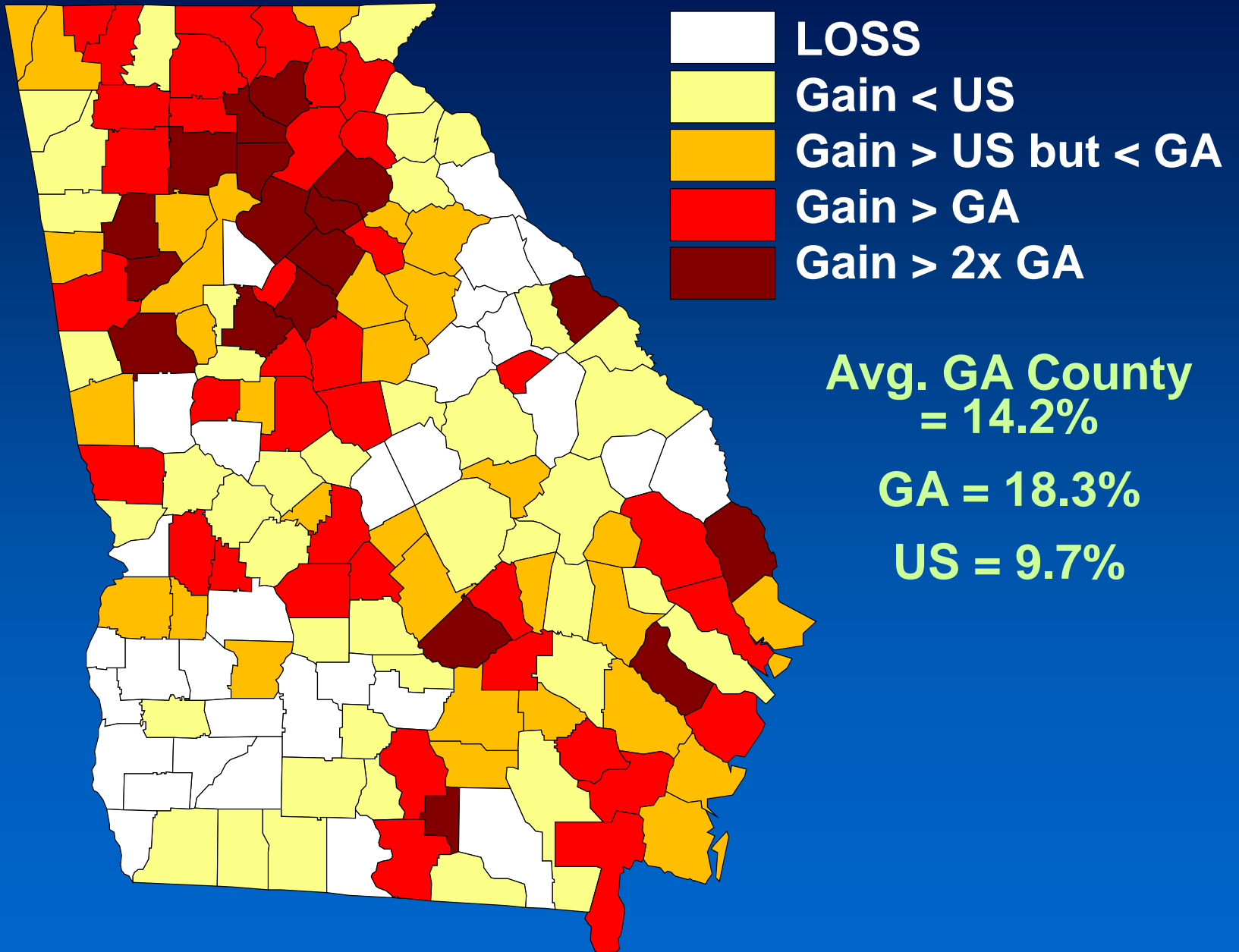
| County | Total | Total Rank | Density per sq.mi. land area | % Chg. 2010-14 | Rank of % Chg. |
|----------|--------|------------|------------------------------|----------------|----------------|
| LAMAR | 18,207 | 96 | 99.2 | -0.60 | 90 |
| BUTTS | 23,368 | 76 | 126.7 | -1.21 | 102 |
| MONROE | 27,051 | 67 | 68.4 | 2.23 | 50 |
| PIKE | 17,784 | 98 | 82.3 | -0.48 | 84 |
| SPALDING | 63,988 | 37 | 325.7 | -0.13 | 81 |
| UPSON | 26,256 | 69 | 81.2 | -3.30 | 128 |

Population Change: 1930-2010



Primary data source: U.S. Census Bureau

Population Change: 2000-2010



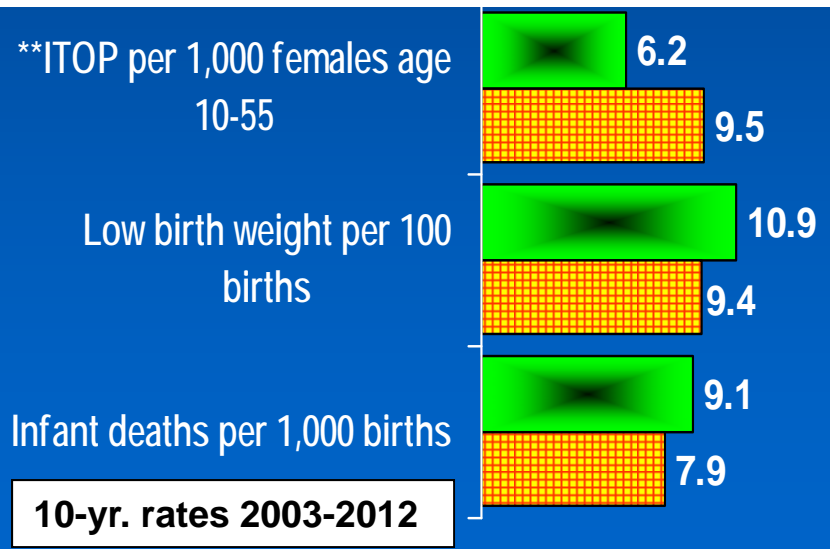
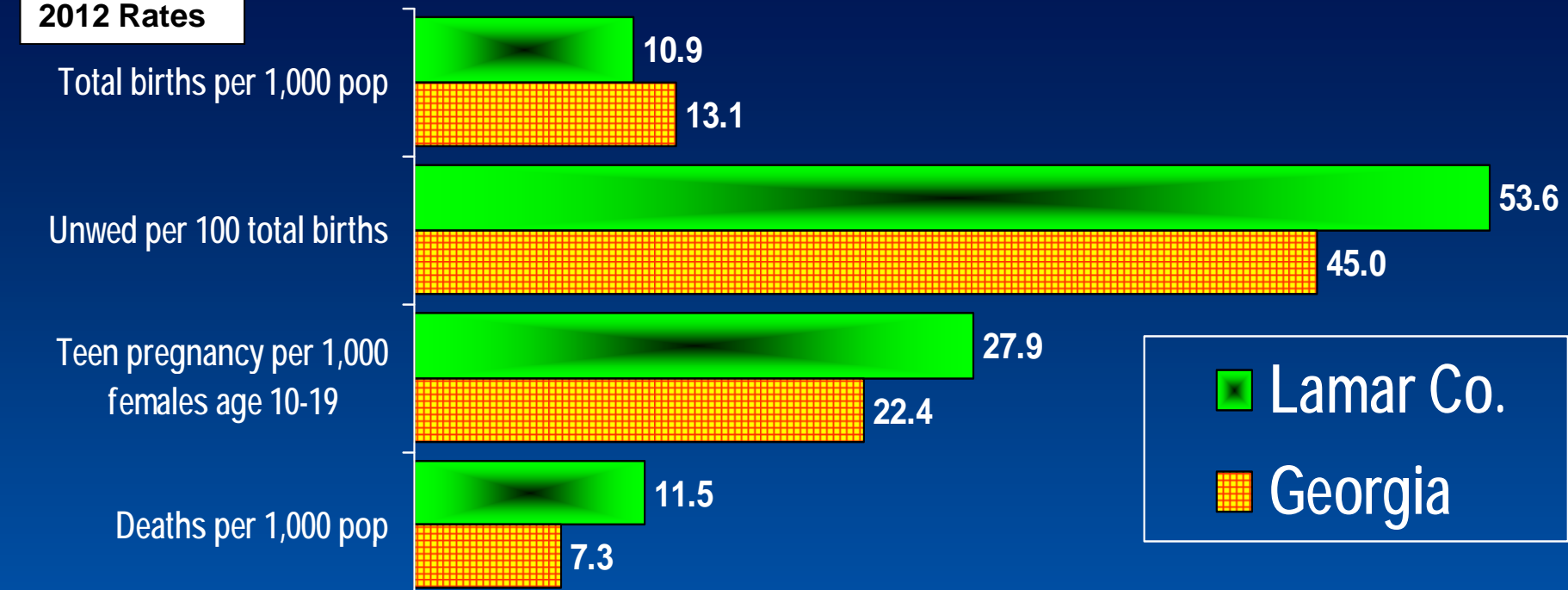
Components of Population Change

Natural Increase & Net Migration*

| Area | 4/1/2010- 6/30/2014 Numerical Change* | 4/1/2010- 6/30/2014 # Natural Increase (Births-Deaths) | 4/1/2010- 6/30/2014 # Net Migration | 7/1/2013- 6/30/2014 1-yr Natural Increase Rate | 7/1/2013- 6/30/2014 1-yr Net Migration Rate |
|-------------|--|--|--|--|---|
| LAMAR | -110 | -1 | -128 | -1.1 | 15.8 |
| BUTTS | -287 | 181 | -428 | 1.5 | 4.8 |
| MONROE | 590 | 57 | 460 | -1.3 | 1.9 |
| PIKE | -85 | 64 | -148 | 0.7 | -0.7 |
| SPALDING | -85 | 644 | -792 | 1.2 | 2.3 |
| UPSON | -897 | -170 | -722 | -2.5 | -7.0 |
| Avg. County | 2,570 | 1,561 | 954 | 2.4 | -0.6 |
| GEORGIA | 408,662 | 248,226 | 151,661 | 5.4 | 4.7 |

Selected Vital Statistics

2012 Rates



10-yr. rates 2003-2012

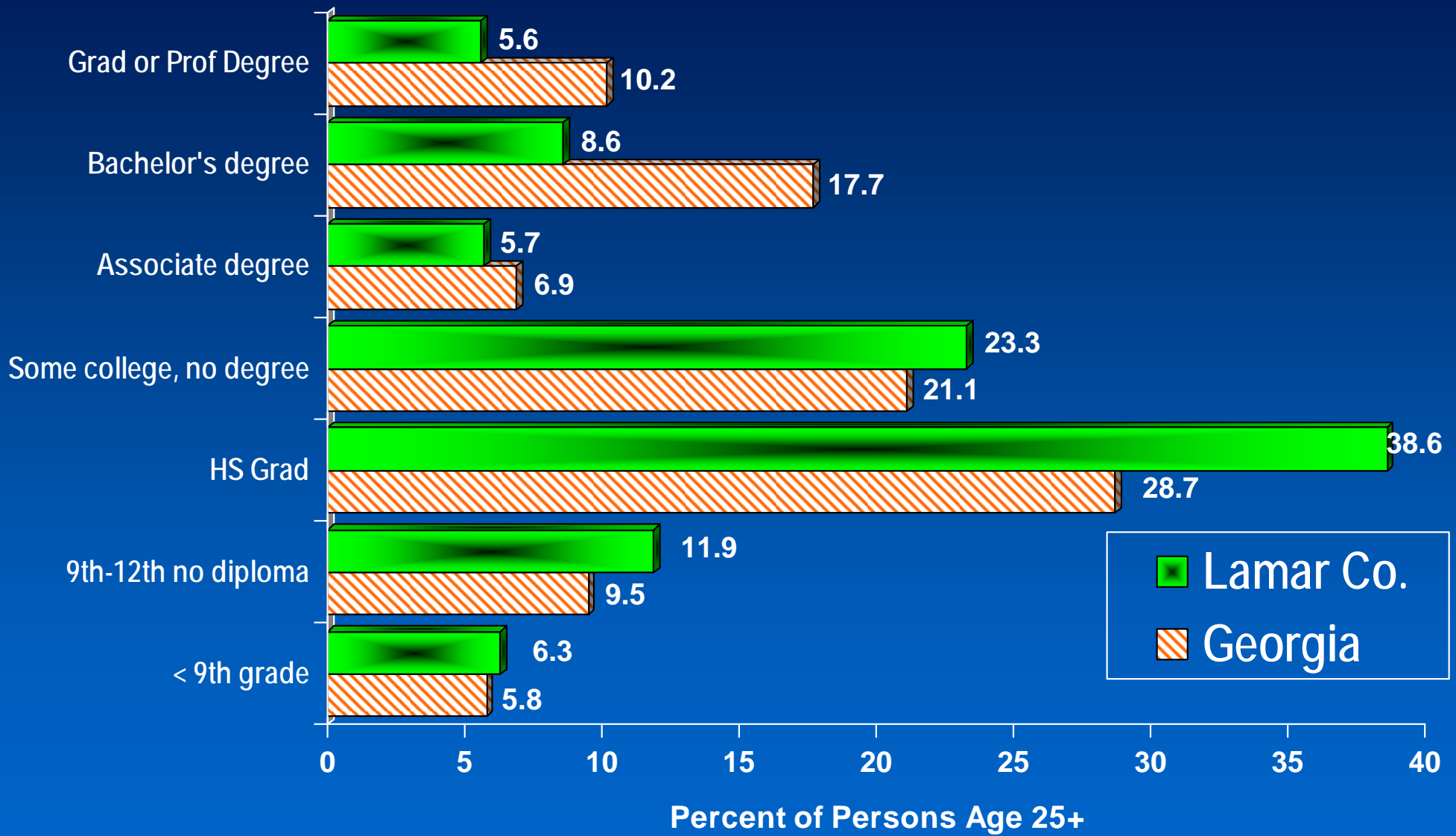
2012 Lamar Co. Natality Data
 196 total births, 105 unwed births
 37 induced terminations
 41 teen pregnancies
 20 low birth weight babies

2012 Lamar Co. Mortality Data
 207 total deaths
 2 infant deaths

Primary data source: GA Dept. Public Health, OASIS

**ITOP—Induced Terminations of Pregnancy

Highest Level of Educational Attainment: 2009-2013 5 Yr. Avg. – American Community Survey



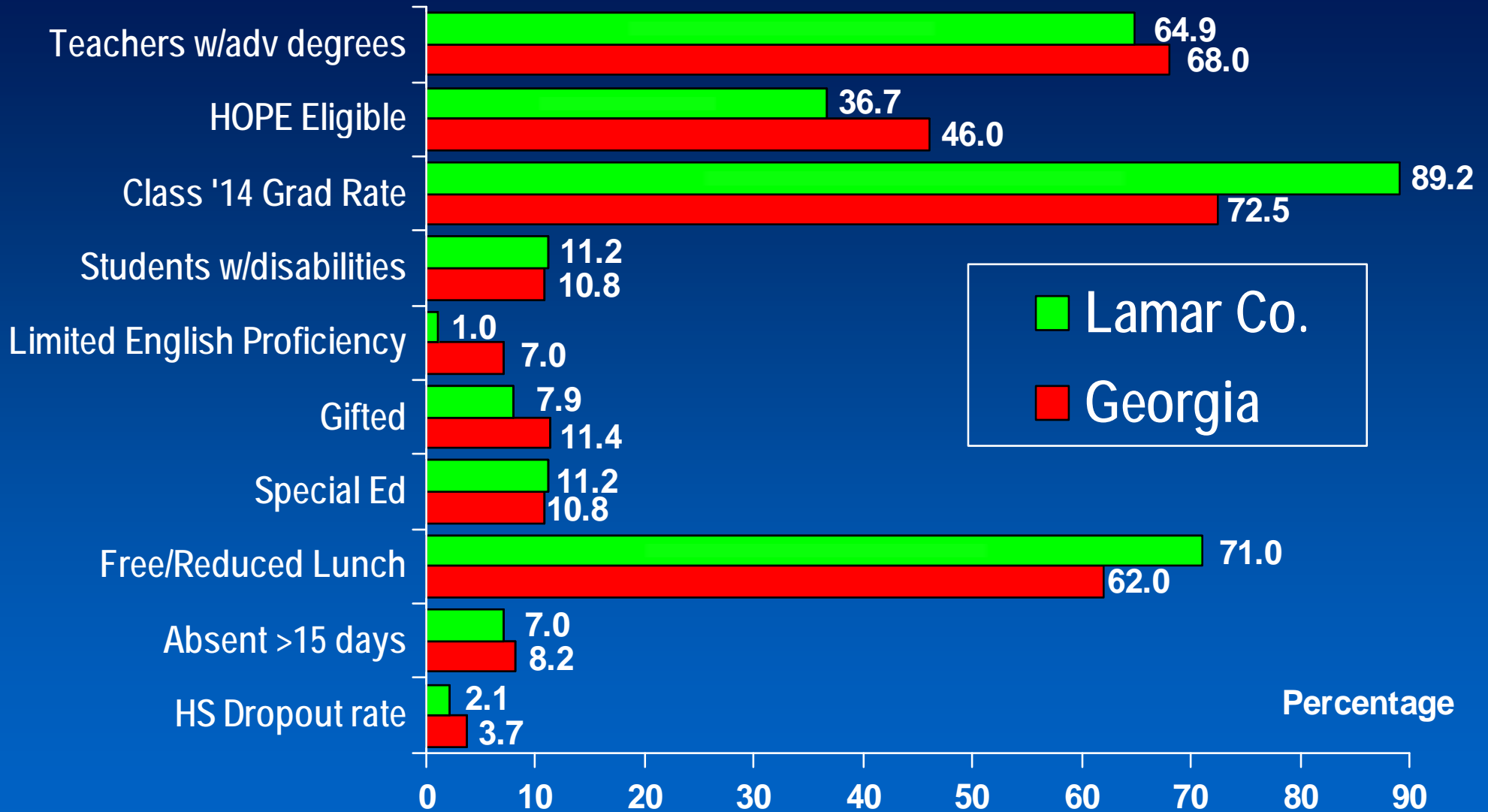
Lamar Co.

Not completing HS = 18.1%

With a bachelor's + degree = 14.2%

Primary data source: U.S. Census Bureau

Selected Public School Statistics School Year 2013-14



■ Lamar Co.
■ Georgia

Percentage

Lamar Co.

K12 enrollment = 2,483

HS dropouts = 16

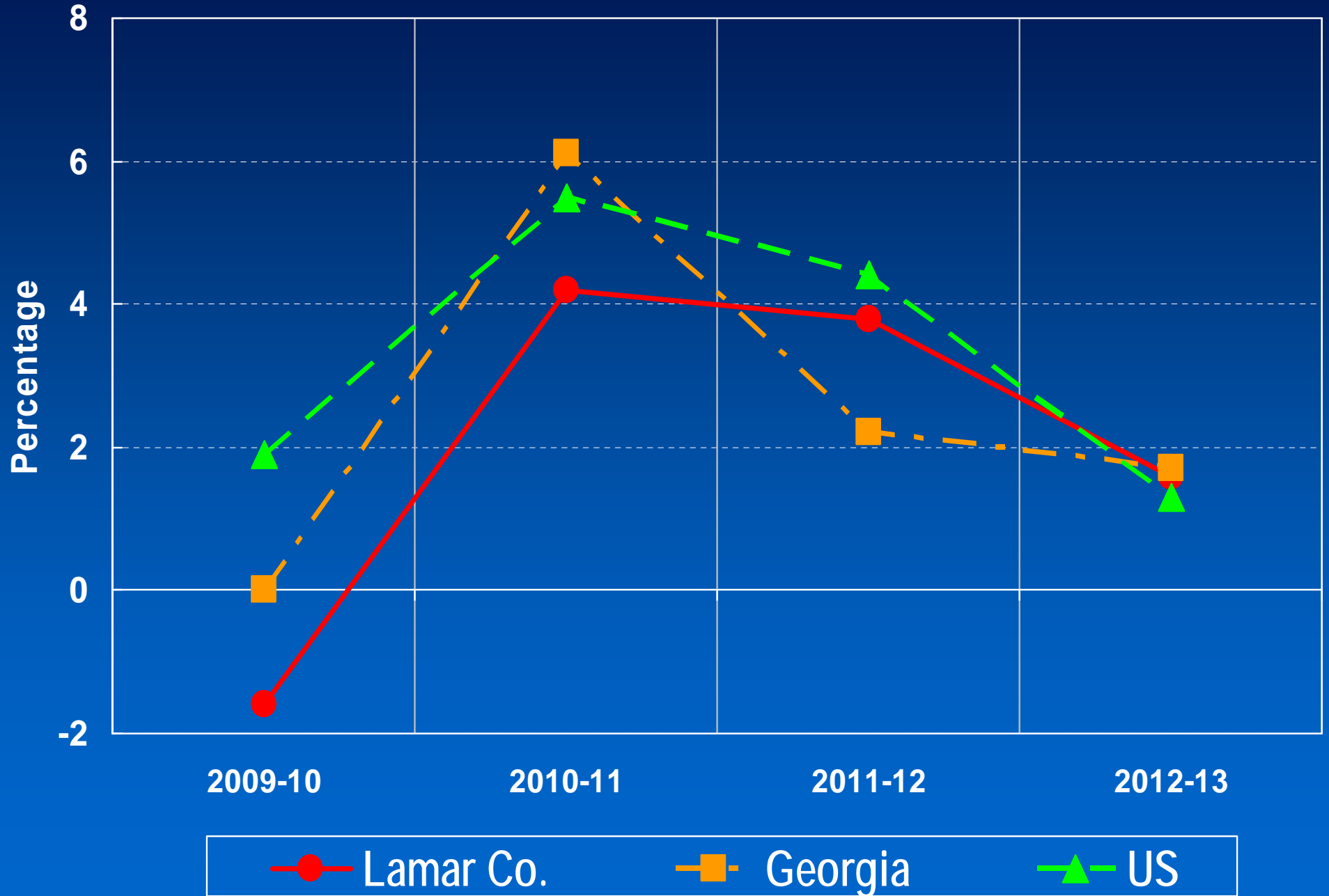
Primary data source:
Governor's Office of Student Achievement

General Fund Expenditures per FTE = \$7,981

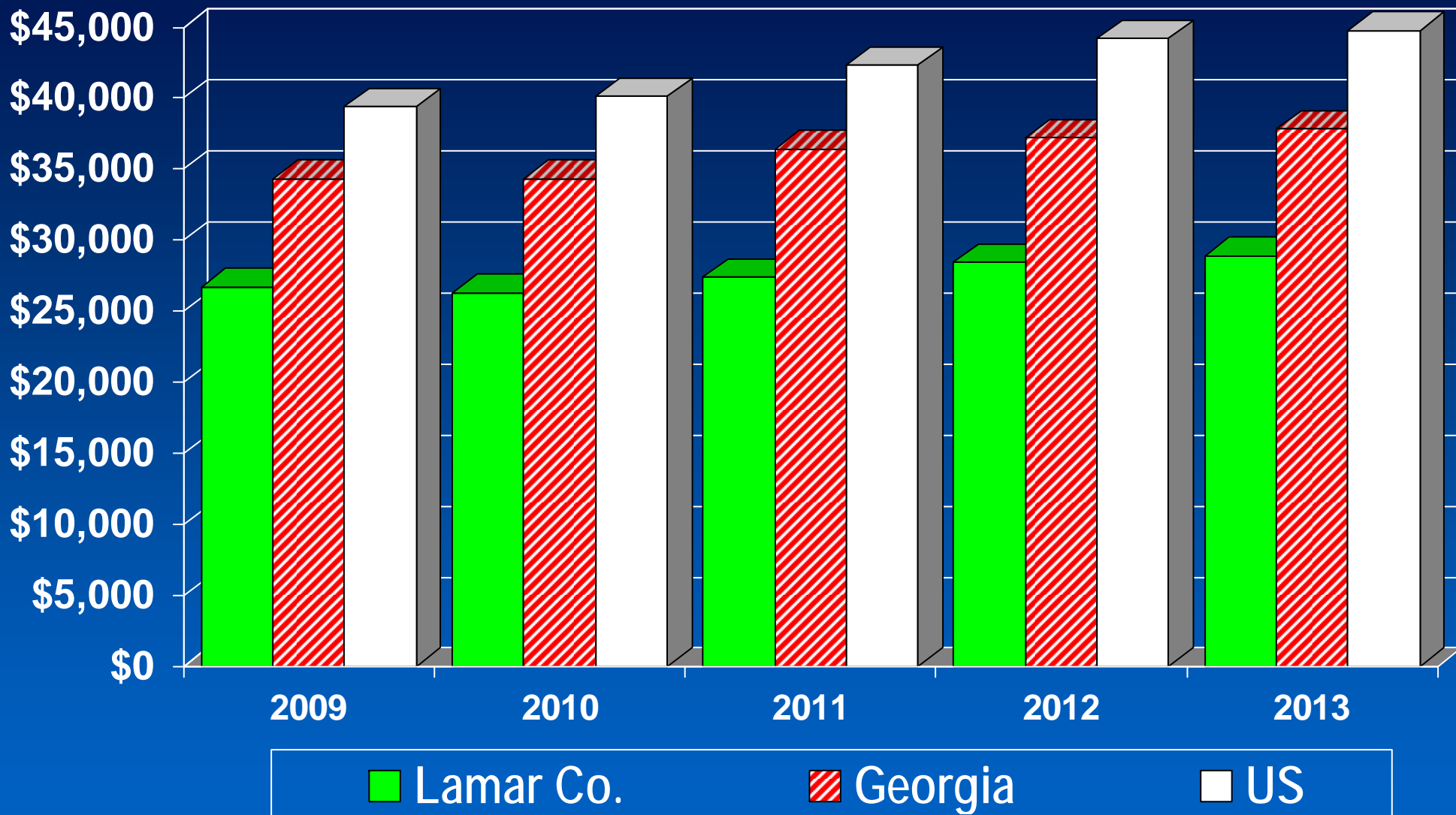
Per Capita Income: 2013

| County | PCI | Rank of PCI | % PCI of GA Total | % Change in PCI 2009-2013 |
|-------------|----------|-------------|-------------------|---------------------------|
| LAMAR | \$28,920 | 114 | 76.4 | 8.3 |
| BUTTS | \$26,436 | 138 | 69.9 | 4.7 |
| MONROE | \$42,808 | 10 | 113.1 | 13.6 |
| PIKE | \$33,335 | 55 | 88.1 | 12.0 |
| SPALDING | \$29,308 | 103 | 77.4 | 7.6 |
| UPSON | \$30,252 | 89 | 79.9 | 11.5 |
| GA Avg. Co. | \$32,146 | -- | 84.9 | 12.9 |

Per Capita Income: 2009-2013 Percentage Change



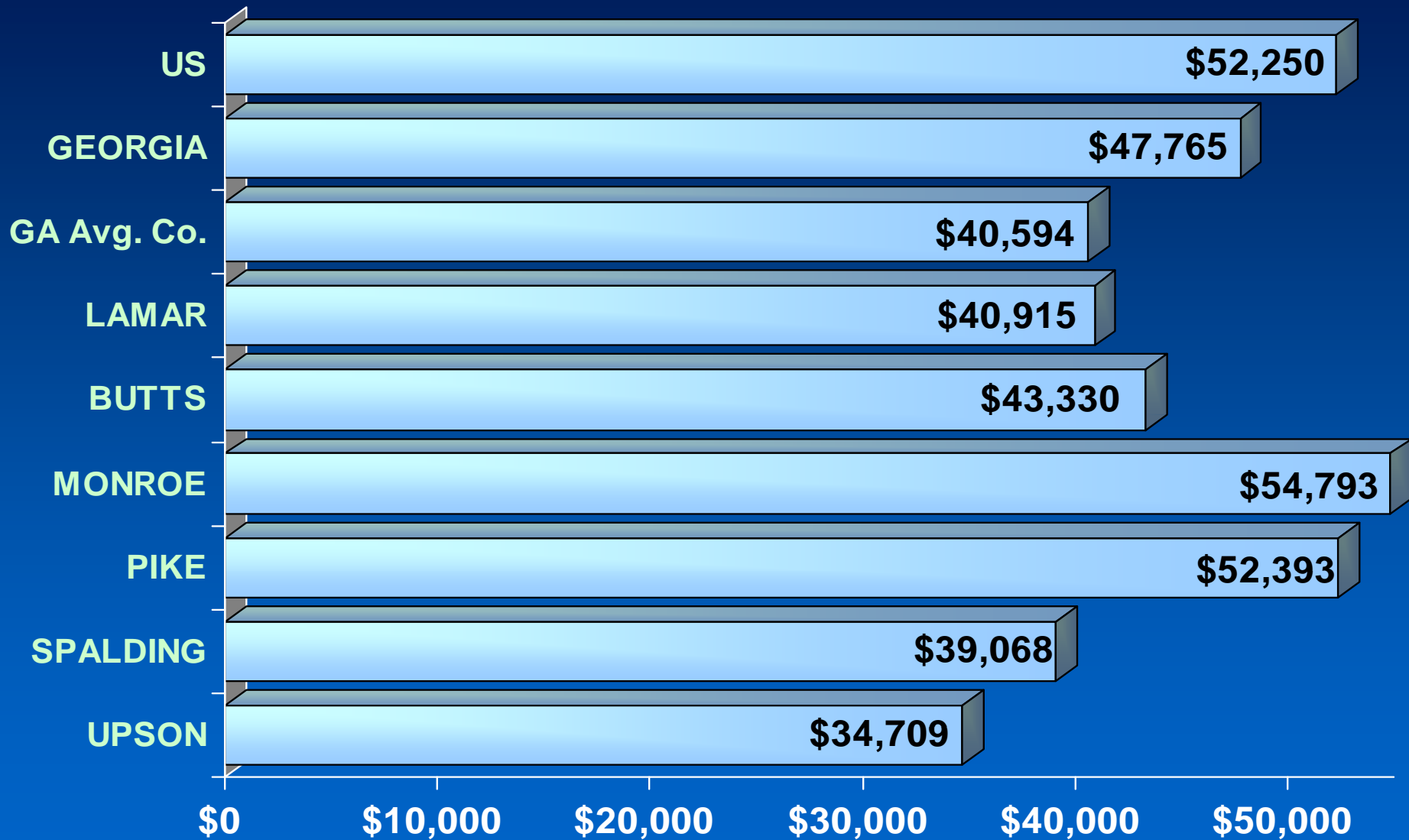
Per Capita Income: 2009-2013



2013 PCI
Lamar Co. = \$28,920

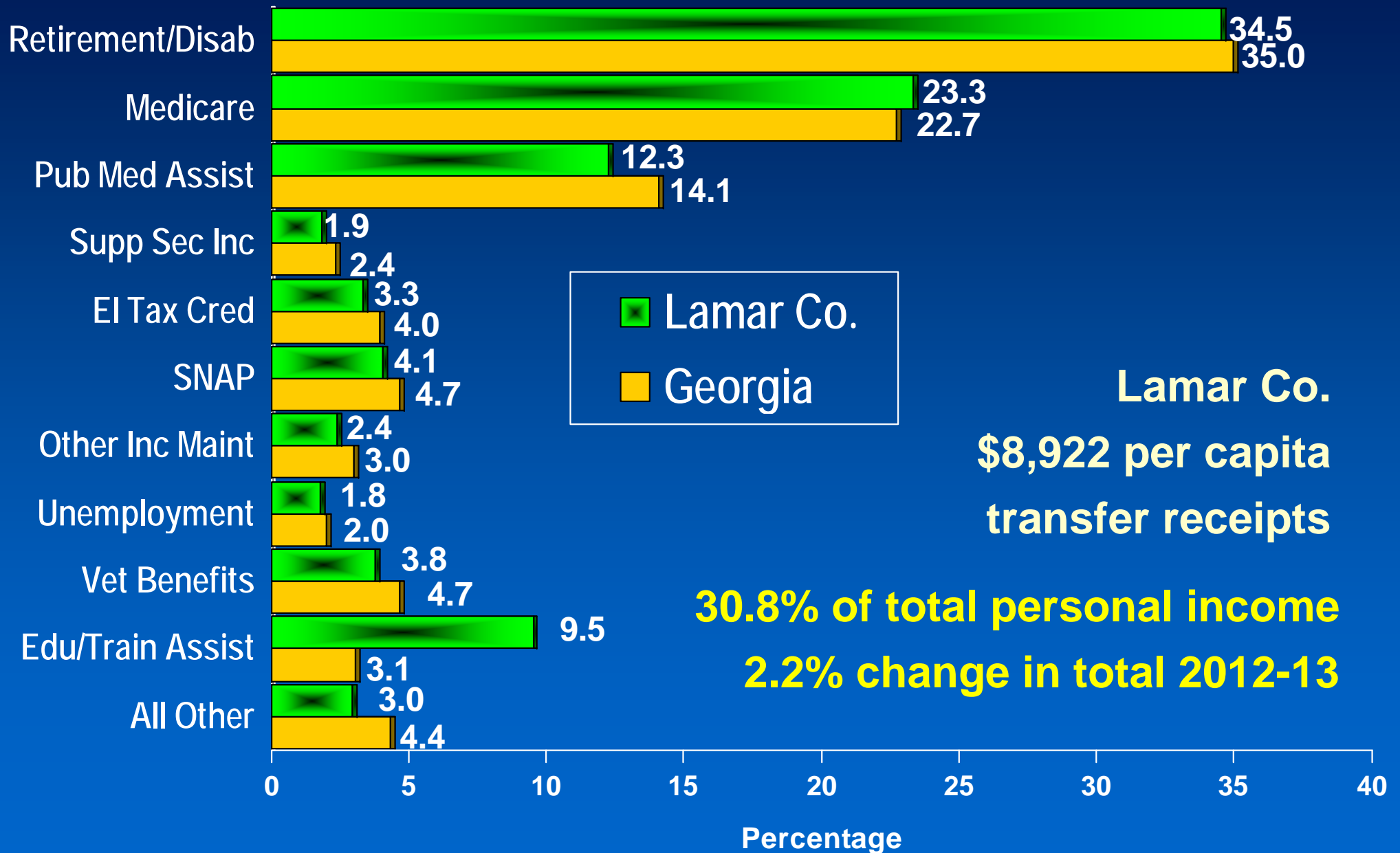
Georgia = \$37,845
US = \$44,765

Median Household Income 2013 Model-Based Estimates

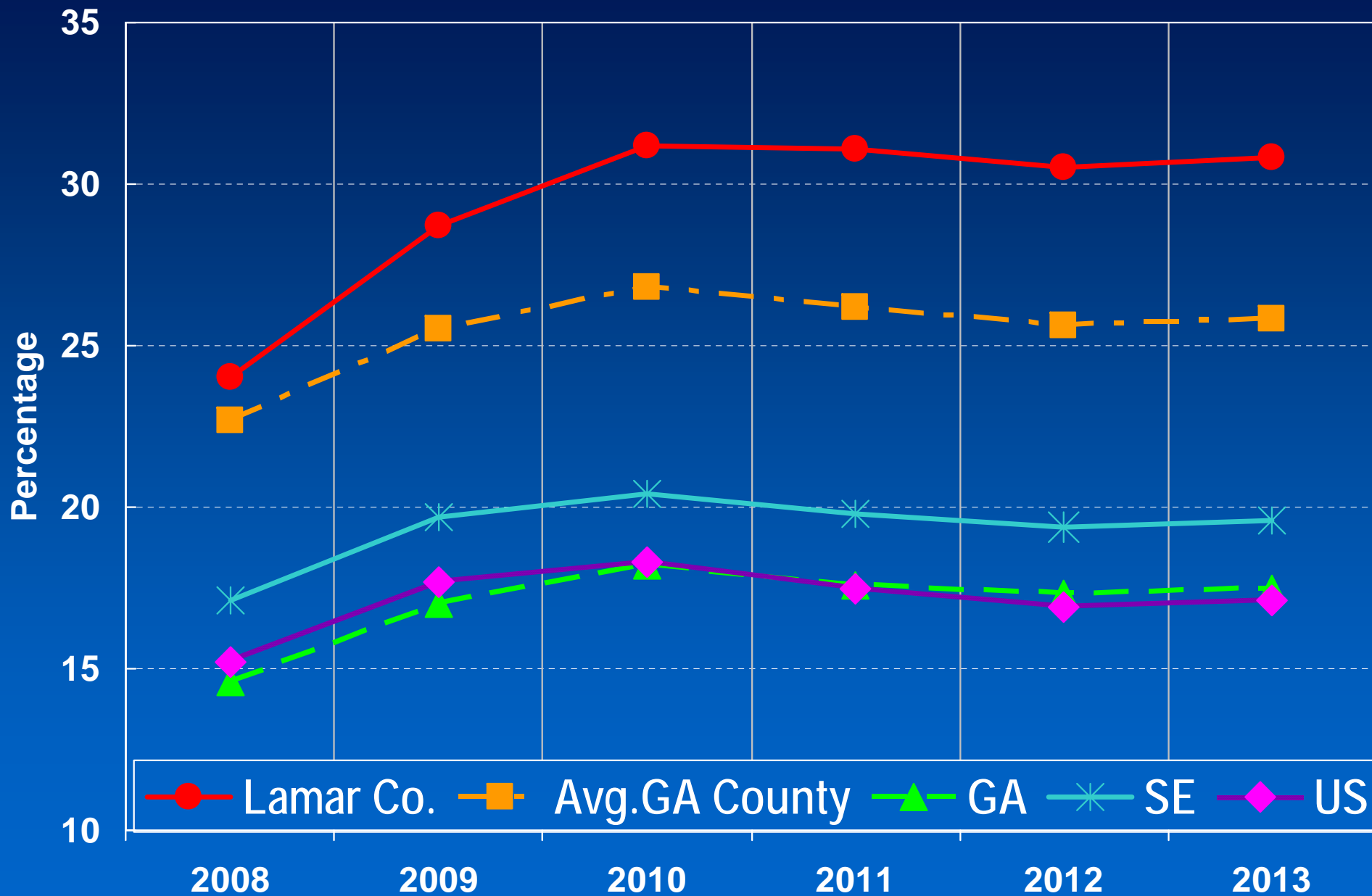


Personal Current Transfer Receipts: 2013

Lamar Co. Total = \$160,224,000



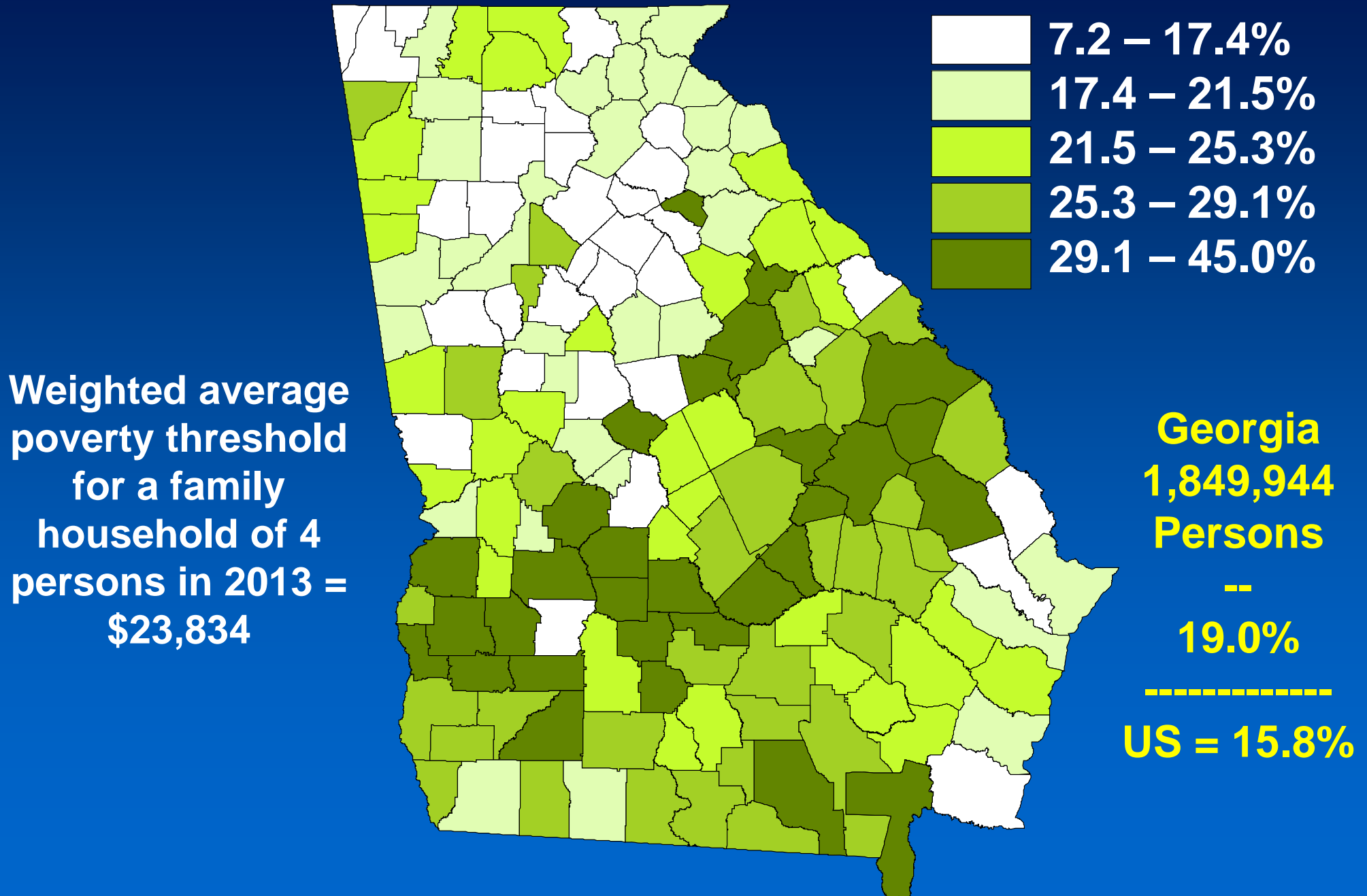
Transfer Receipts as a Percentage of Total Personal Income 2008-2013



Persons Living Below Poverty Level 2013 Model-Based Estimates

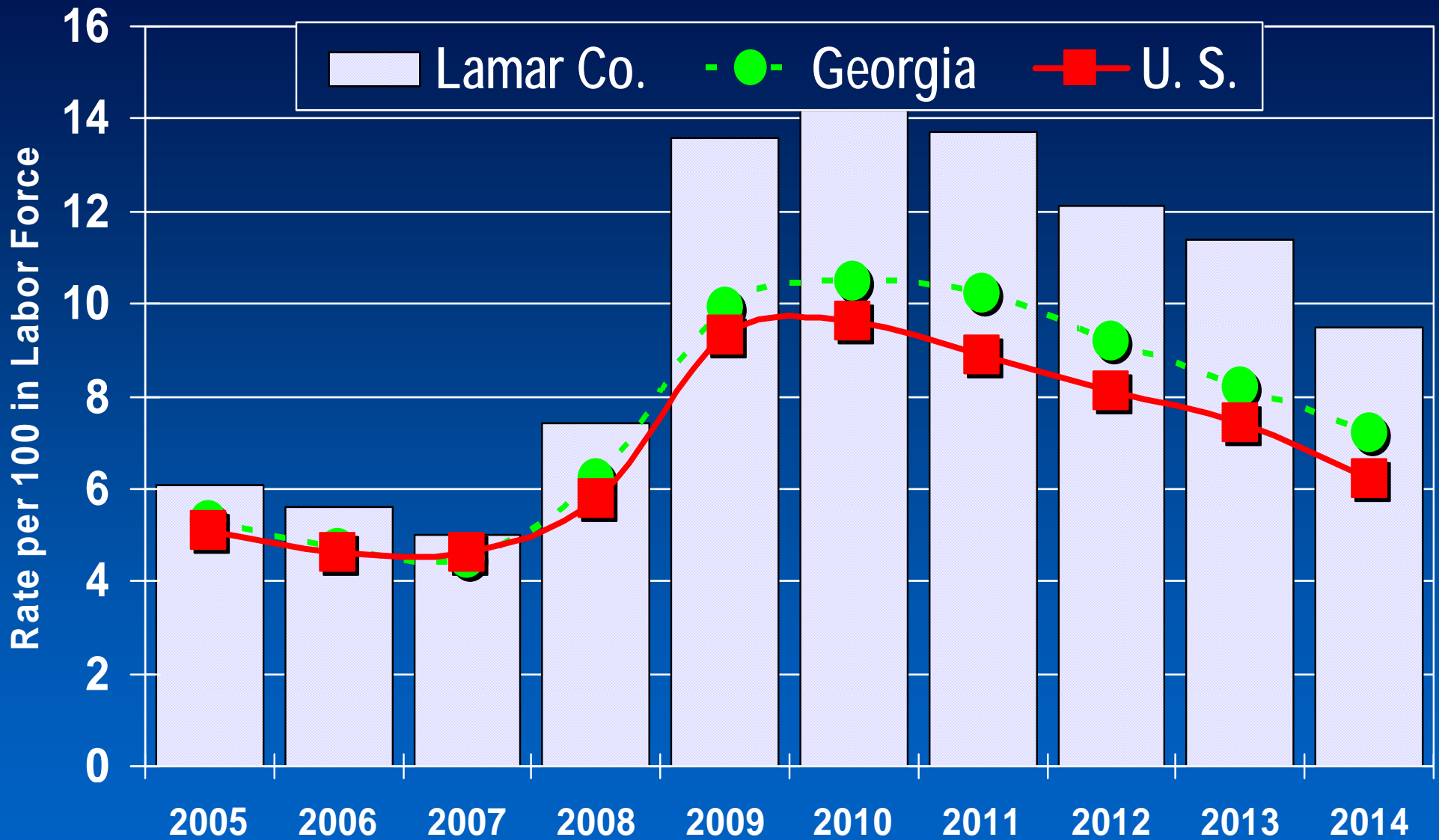
| County | # of Persons | % of all Persons | Rank of % |
|-------------|--------------|------------------|-----------|
| LAMAR | 3,305 | 19.7 | 46 |
| BUTTS | 4,569 | 22.0 | 69 |
| MONROE | 3,596 | 13.9 | 16 |
| PIKE | 2,410 | 13.8 | 15 |
| SPALDING | 13,185 | 21.1 | 61 |
| UPSON | 5,810 | 22.3 | 73 |
| GA Avg. Co. | 11,651 | 23.3 | -- |

Persons Living Below the Poverty Level 2013 Model-Based Estimates



Primary data source: U.S. Census Bureau (12/14)

Civilian Labor Force Average Annual Unemployment Rates



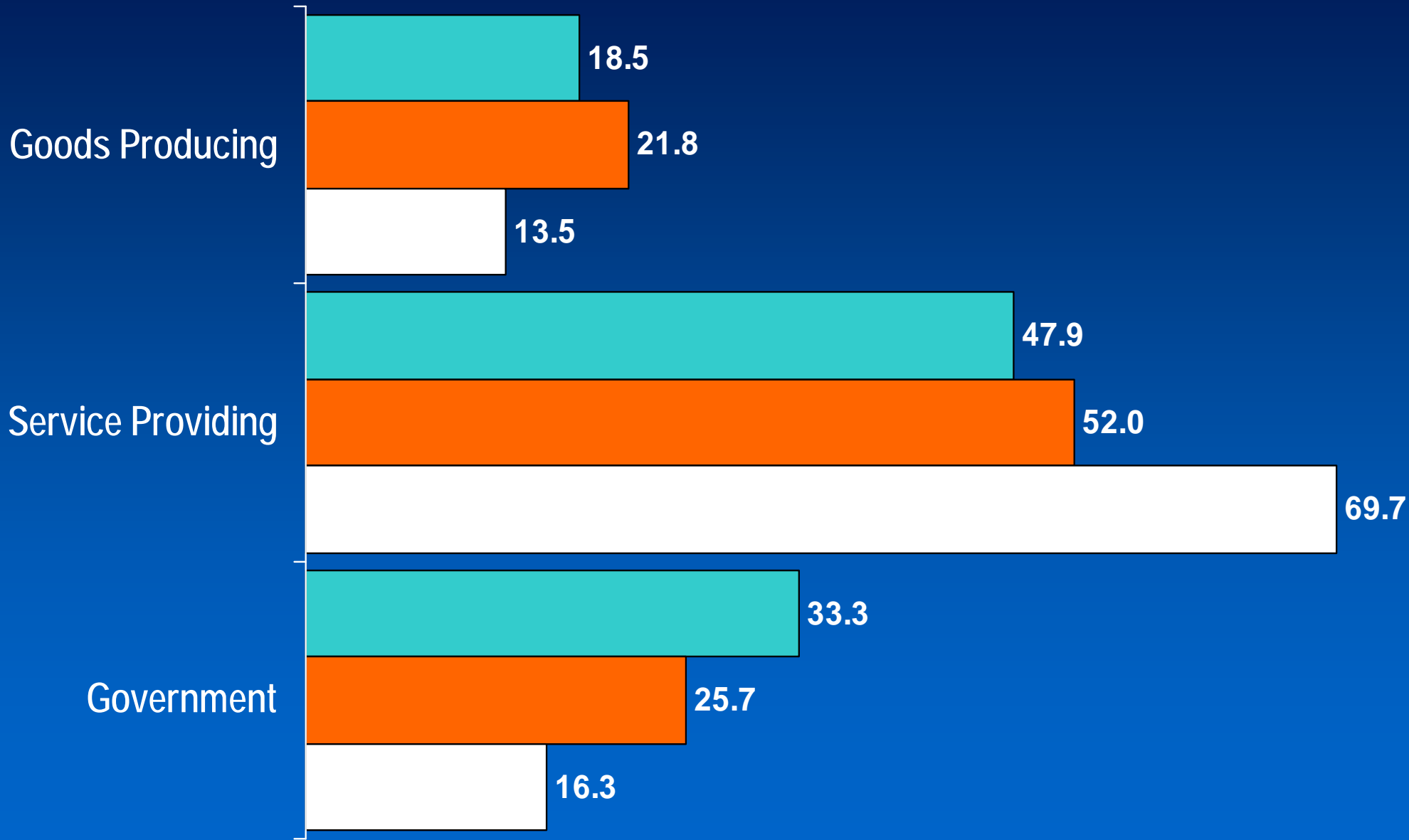
2014 Rates Lamar Co. = 9.5 GA = 7.2 US = 6.2
Avg. GA County = 8.1

Establishments, Employment & Wages: 2013 Averages

| Lamar County | Avg. # Establishments | Avg. Monthly Employment | Avg. Wage Weekly |
|-----------------------------------|----------------------------------|------------------------------------|-----------------------------|
| TOTAL GOODS PRODUCING | 43 | 641 | \$830 |
| Ag, forestry, fishing | 9 | 72 | \$624 |
| Construction | 23 | 51 | \$592 |
| Manufacturing | 10 | 517 | \$880 |
| TOTAL SERVICE PROVIDING | 191 | 1,661 | \$494 |
| Wholesale trade | 11 | 102 | \$624 |
| Retail trade | 42 | 42 | \$422 |
| Transp/Warehousing | 13 | 39 | \$682 |
| Finance/Insurance | 11 | 96 | \$738 |
| Professional/Sci/Tech | 20 | 52 | \$559 |
| Admin/Suppt/WasteMgmt/Remediation | 16 | 99 | \$652 |
| Health care/Soc Svcs | 18 | 272 | \$385 |
| Accommodations/Food Svc | 24 | 304 | \$216 |
| TOTAL GOVERNMENT | 31 | 1,155 | \$640 |
| TOTAL ALL INDUSTRIES | 272 | 3,466 | \$604 |

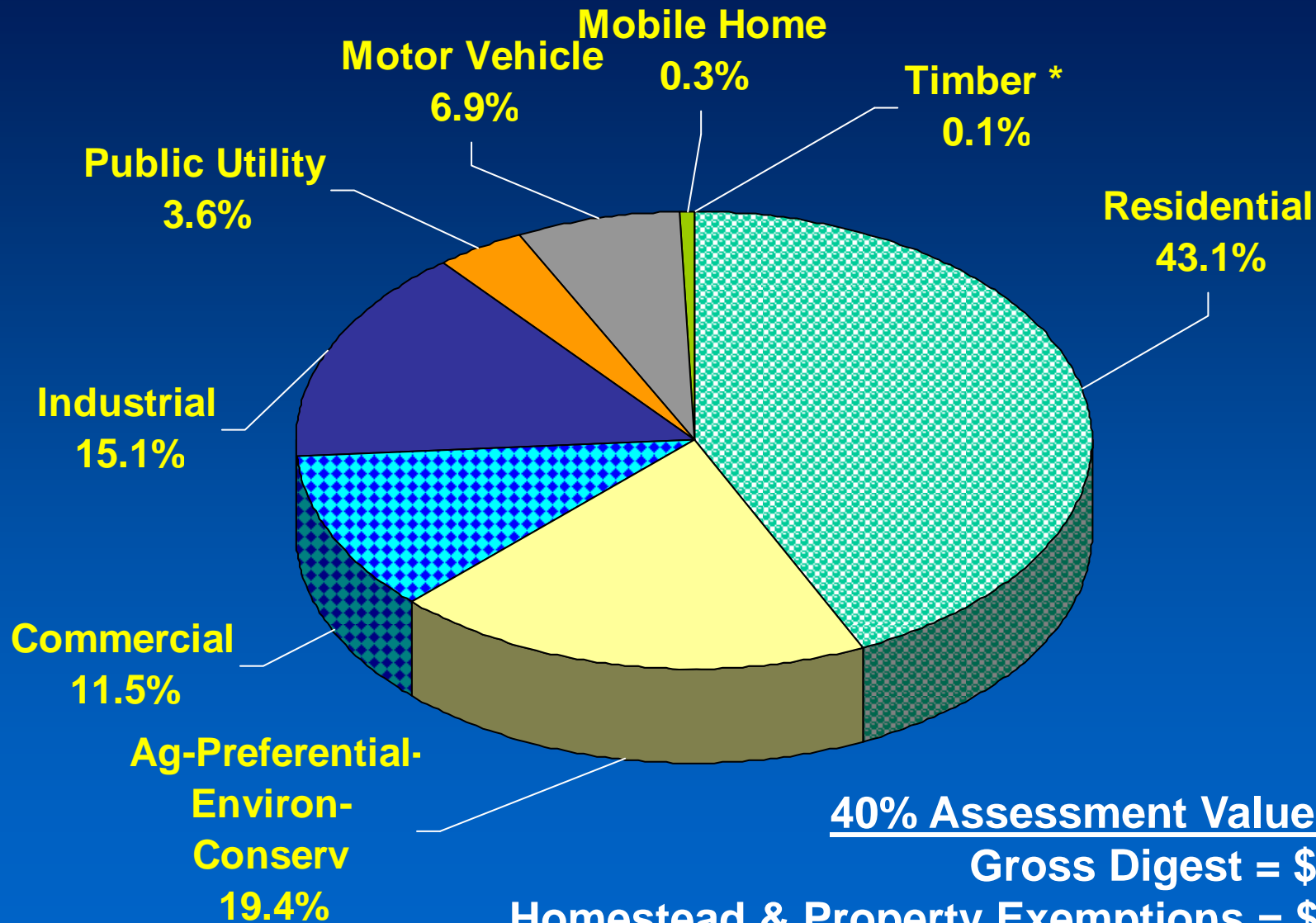
Primary data source: GA Dept. of Labor (6/14)

Employment Comparisons by Industry Group: 2013



Primary data source: GA Dept. of Labor (6/14)

Components of 2013 Property Tax Gross Digest Lamar County



40% Assessment Value of Property

Gross Digest = \$576,853,425

Homestead & Property Exemptions = \$104,951,211

Net M&O Digest = \$471,902,214

Value of exempt property = \$7,1160,545

Primary data source:
GA Dept. of Revenue

* Timber taxed at 100% based on previous year sales

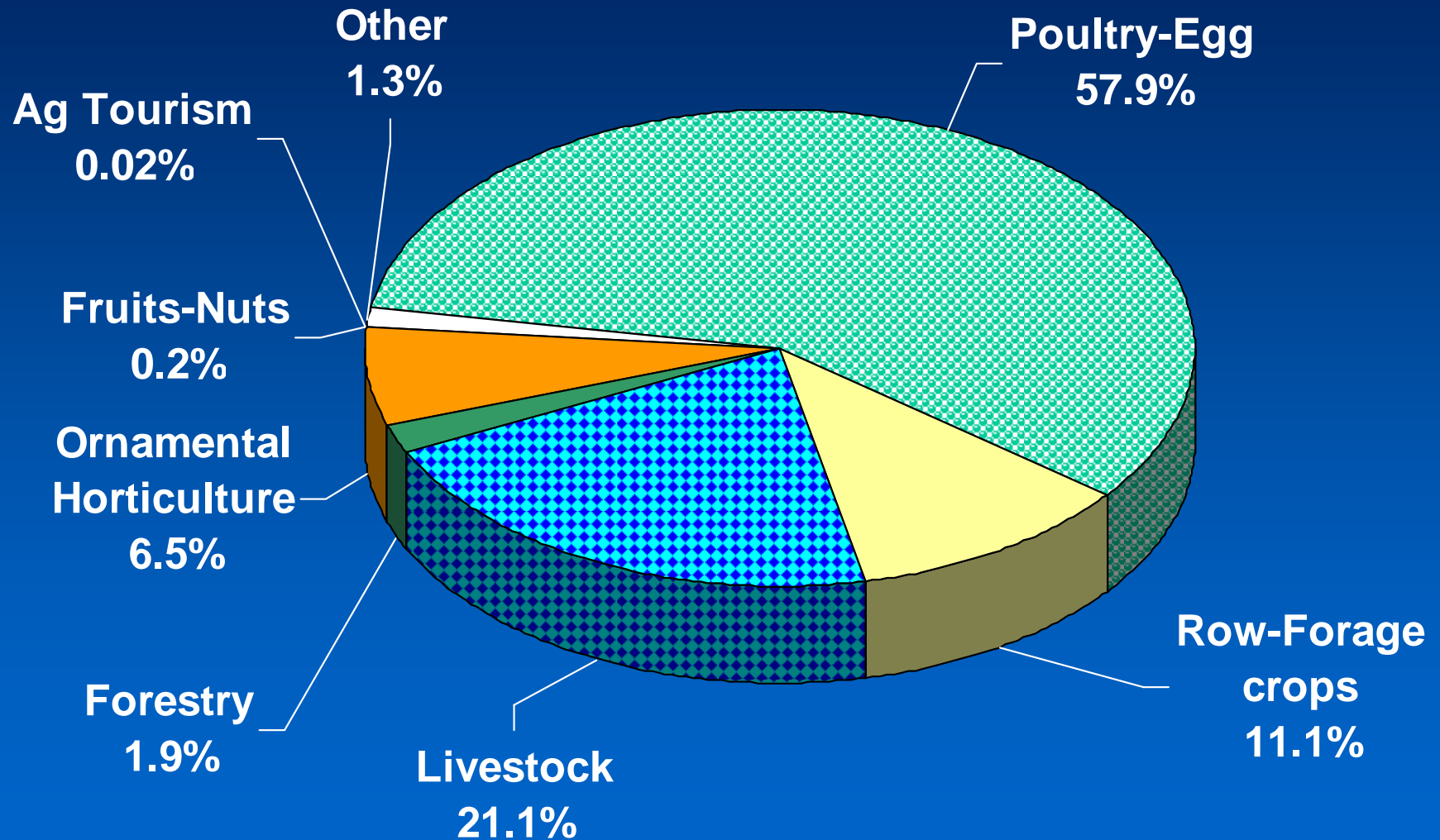
Millage Rates, Taxes Levied, & Sales Tax Rate

| County | 2013 County-wide Millage* | 2013 Taxes Levied* | Sales Tax Rate as of 7/1/2015 | LOST Type* as of 7/1/2015 |
|----------|---------------------------|--------------------|-------------------------------|---------------------------|
| LAMAR | 27.263 | \$13,833,923 | 7 | LSE |
| BUTTS | 33.313 | \$19,444,181 | 7 | LSE |
| MONROE | 25.323 | \$33,046,108 | 7 | LSE |
| PIKE | 29.264 | \$13,137,045 | 7 | LSE |
| SPALDING | 39.800 | \$58,151,296 | 6 | LE |
| UPSON | 31.990 | \$20,188,332 | 7 | LSE |

*Countywide Includes .250 state millage. Taxes levied, but not necessarily collected. L=Local Option, S=Special Purpose, E=Educational

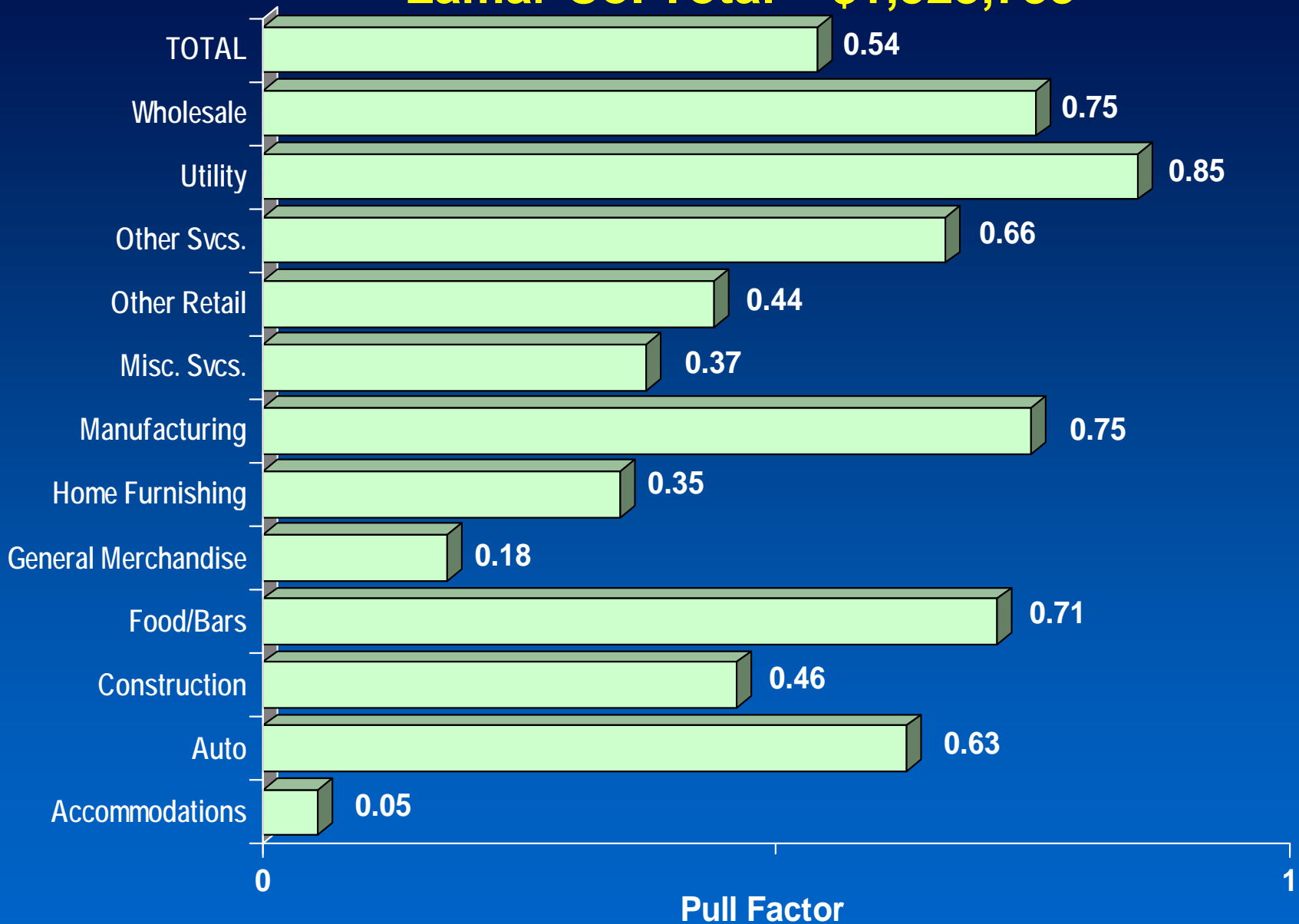
2013 Farm Gate Value by Commodity Group

Lamar Co. Total Value = \$37,070,968



1% Sales & Use Tax Distributions: 2013

Lamar Co. Total = \$1,523,733

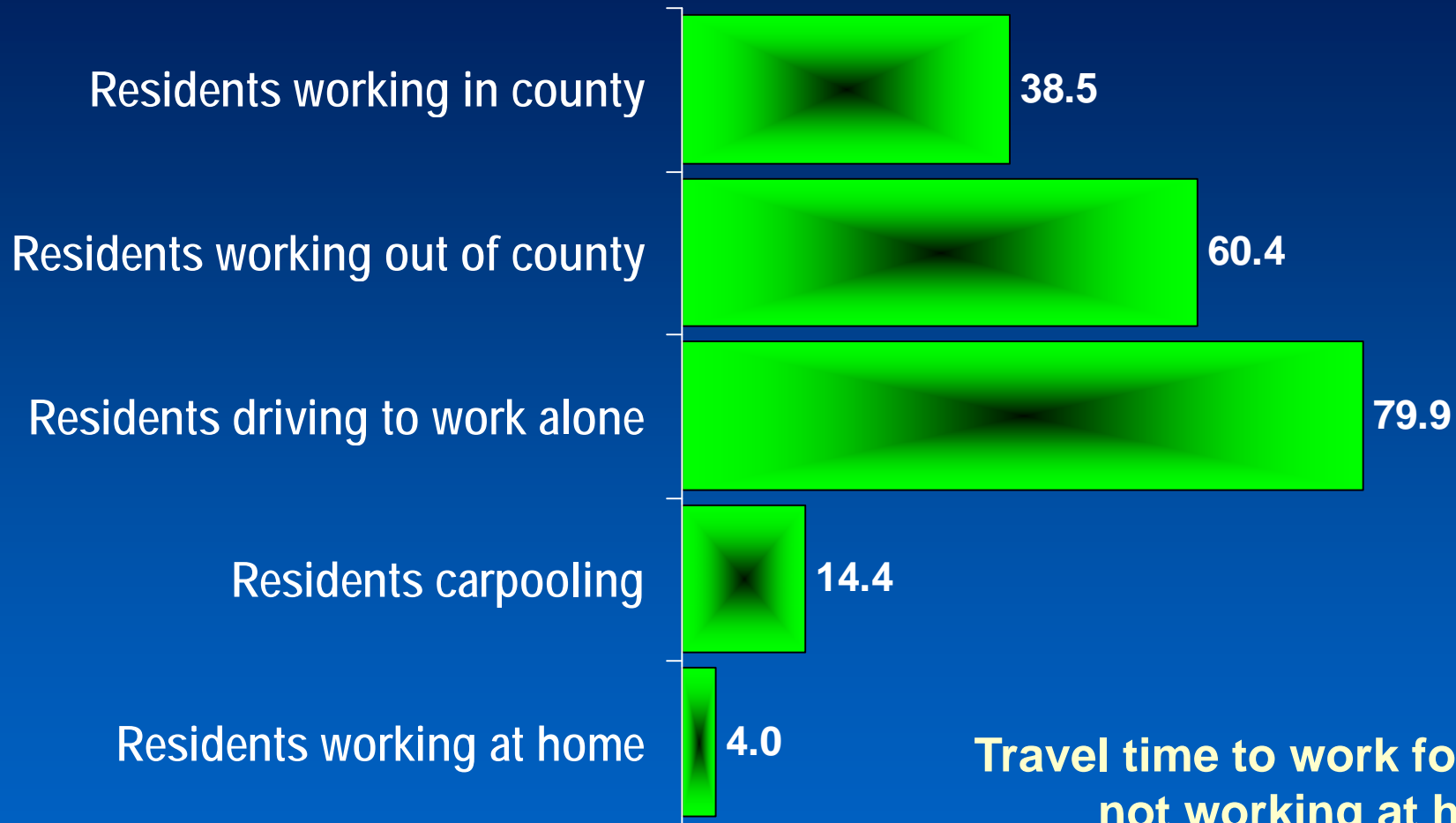


A "pull factor" of 1.0 means that the county's sales are what would be expected based upon the number of residents and their relative wealth.

Primary data sources: Georgia Dept. of Revenue, Sales Tax Commodity Report, Dec. 2014.
Pull factors calculated.

Commuting to Work: 2009-2013 5 Yr. Average – American Community Survey

Percentage of:



Travel time to work for residents
not working at home:

< 20 min. = 38.6%

45+ min. = 25.1%

Lamar Co.

Resident workers 16+ = 6,978

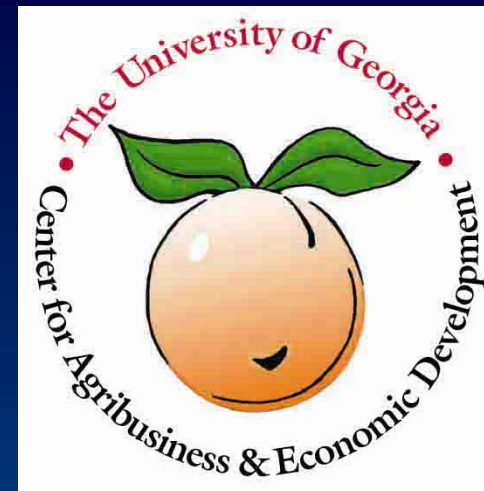
Mean travel time to work
= 30.1 minutes

*This study was developed to assist
community leadership with their
future planning and decision making.*

Special Area Report

15-07

June 2015



***Prepared for Lamar County Cooperative Extension
by Susan R. Boatright***

Center for Agribusiness and Economic Development

College of Agricultural and Environmental Sciences

The University of Georgia • Athens, GA

Georgia Cooperative Extension

www.caes.uga.edu/center/caed/

To learn more about your county check the

“Georgia Statistics System” website:

www.georgiastats.uga.edu