

# The Economic Importance of Food and Fiber

## A Spotlight on Clayton County, Georgia

Prepared for:  
Clayton County Cooperative Extension

Prepared by:



Center for Agribusiness  
and Economic Development  
*College of Agricultural & Environmental Sciences*  
UNIVERSITY OF GEORGIA

March 2017

# Agriculture in Georgia

---

- Georgia's 2015 Farm Gate Value was \$13.8 billion. Adding the value of \$2.2 billion of landscape services increased the total agricultural production value to \$16.0 billion.
- Total food and fiber production and directly related businesses account for a \$74.9 billion *output impact* on Georgia's \$917.6 billion economy.



# What We Know about Clayton County

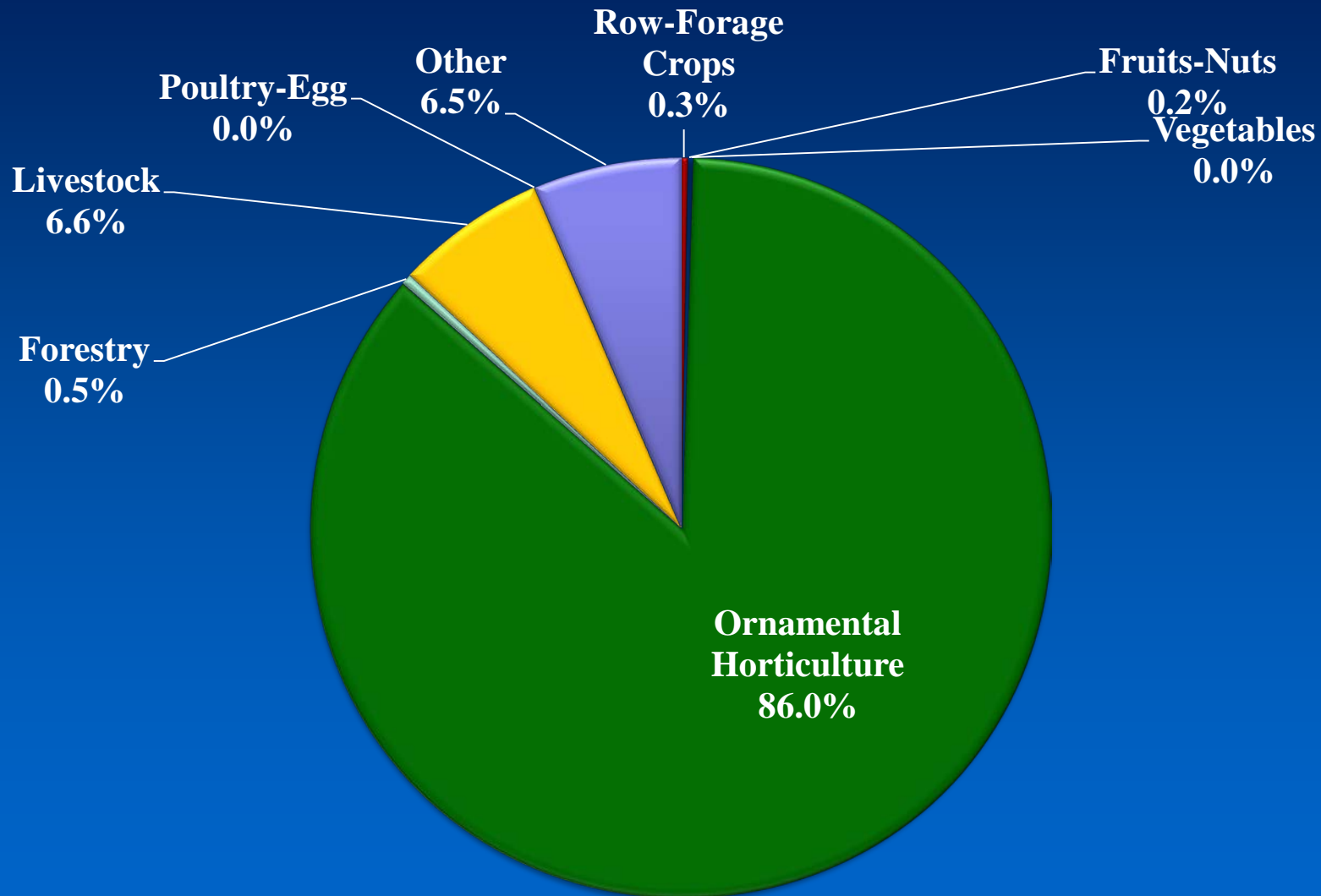
---

- 2015 Farm Gate Value in Clayton Co. was \$47.9 million. Adding \$44.7 million of landscape & horticultural services increased the total to \$92.6 million.
- The highest value commodity group in Farm Gate production was ornamental horticulture, representing 86% of the total agricultural production value.



# Clayton County

## 2015 Farm Gate Production Value



# Examining the Contribution

## County Economy Modeled

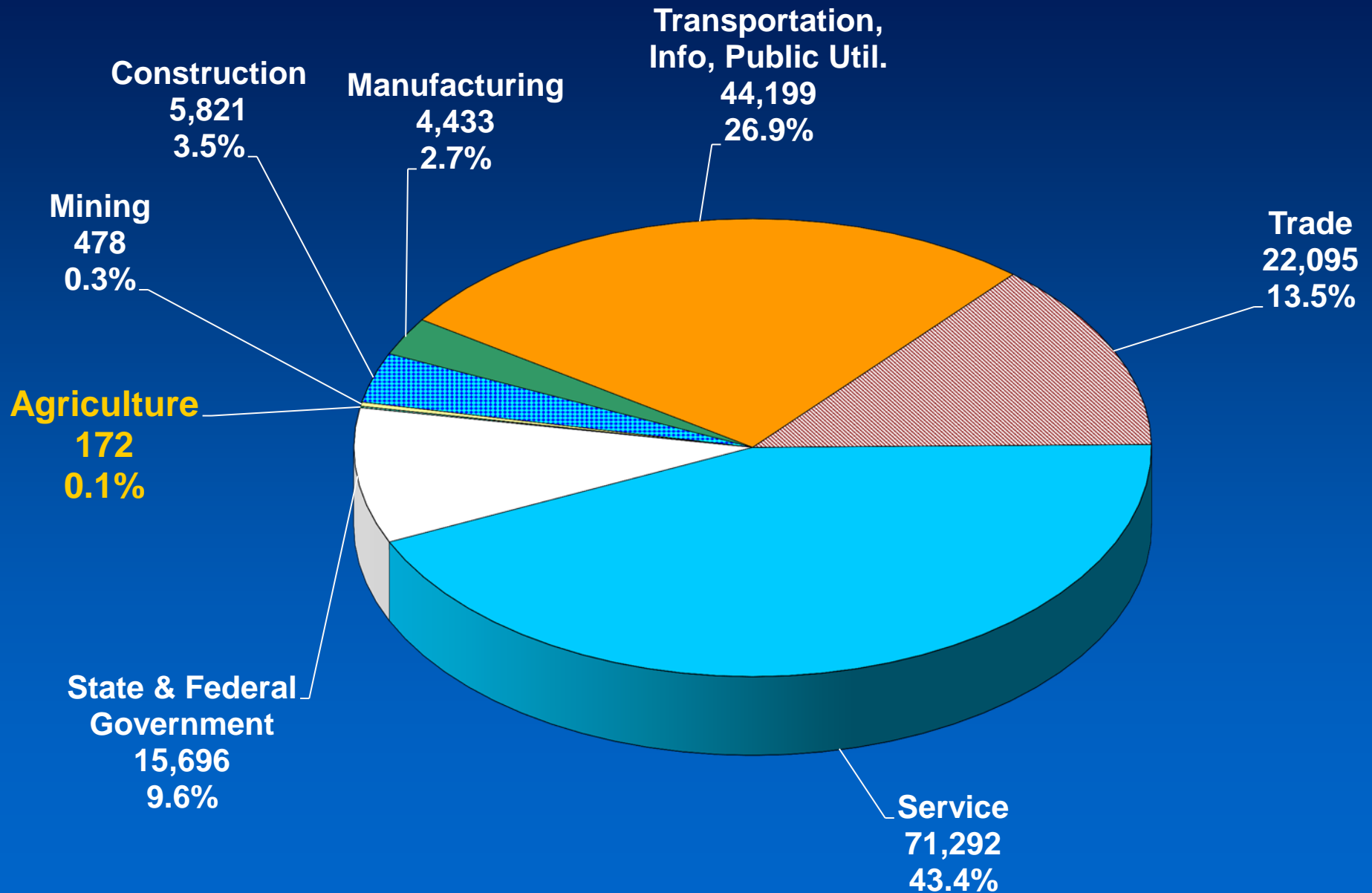
- The Center for Agribusiness and Economic Development performed an analysis of the county's economy, focusing on the role of food and fiber.
- How much of the county's total current economic output comes from food and fiber production and directly related processing? (A Snapshot of the Economy)
- What is the total (direct and indirect) *Economic Contribution* of food and fiber production and directly related industries?





# Clayton County Employment

Total Jobs = 164,185



# An Economic Snapshot of Clayton County

---

- How much of Clayton County's total economic output comes from food and fiber production?
- AG value alone of \$92.6 million consisting of Farm Gate Value and landscape services comprises 0.35% of the county's economy.
- AG plus directly related businesses (ex. Ag Support Services, Processing, etc.) comprise 0.77% of the county's economy.



# What is the Economic Contribution?

---

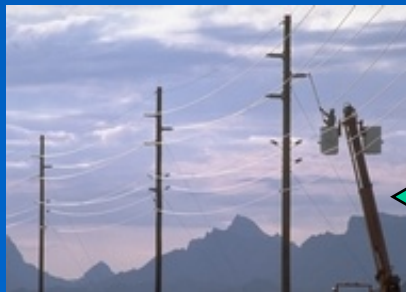
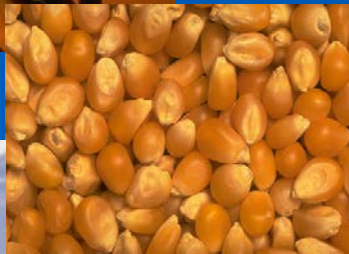
- What is the total (direct and indirect) *contribution* of food and fiber production and directly related industries?
- This scenario illustrates how other industries are affected by the presence of food and fiber in the county. The indirect contribution measures output created due to food and fiber production and processing in the county.





# What Economic Contribution Means: A Brief Explanation

- The *contribution* numbers capture the ripple effects that food and fiber create in the county's economy. Many other sectors rely in part on the existence of food and fiber for sales.
- Further, agricultural commodities are sold to other sectors as the inputs to production.



# Clayton County

## Agriculture *Contribution*

Sector	Direct	Total
<b>Ag + Landscape Services</b>	<b>\$92,605,457</b>	<b>\$92,605,457</b>
Mining		57,968
Utilities		1,232,475
Construction		740,713
Manufacturing		333,709
Wholesale Trade		4,750,376
Retail trade		3,316,320
Transportation & Warehousing		2,967,069
Information		2,452,843
Finance & insurance		2,456,378
Real estate & rental		7,094,161
Professional- scientific & tech services		997,421
Management of companies		202,599
Administrative & waste services		2,025,849
Educational services		185,546
Health & social services		4,143,845
Arts-entertainment & recreation		433,774
Accommodation & food services		2,112,165
Other services		1,980,849
Government & non NAICS		126,352
<b>TOTAL</b>	<b>\$92,605,457</b>	<b>\$130,215,868</b>

**Total  
Contribution  
of Production  
AG = \$130.2  
million  
0.49% of total  
economy**

# Clayton County

## Production Agriculture + Directly Related Industries Contribution

Sector	Direct	Total
<b>Ag + Related Industries</b>	\$207,361,980	\$207,361,980
Mining		117,012
Utilities		2,597,329
Construction		1,290,608
Other Manufacturing		631,799
Wholesale Trade		8,441,653
Retail trade		4,435,588
Transportation & Warehousing		8,899,188
Information		3,519,620
Finance & insurance		3,552,223
Real estate & rental		9,133,591
Professional- scientific & tech services		1,548,489
Management of companies		1,107,238
Administrative & waste services		3,226,837
Educational svcs		225,338
Health & social services		5,139,064
Arts- entertainment & recreation		593,736
Accommodation & food services		2,878,745
Other services		2,672,494
Government & non NAICS		274,674
<b>Total</b>	\$207,361,980	\$267,407,207

**Total  
Contribution  
of AG +  
Related =  
\$267.4 million  
1.0% of total  
economy**

# Clayton County

## Production Agriculture + Directly Related Industries Employment *Contribution*

Sector	Direct	Total
<b>Ag + Related Industries</b>	<b>2,561</b>	<b>2,561</b>
Mining		1
Utilities		2
Construction		9
Manufacturing		2
Wholesale Trade		42
Retail trade		62
Transportation & Warehousing		54
Information		7
Finance & insurance		22
Real estate & rental		30
Professional- scientific & tech services		21
Management of companies		6
Administrative & waste services		63
Educational svcs		6
Health & social services		64
Arts- entertainment & recreation		13
Accommodation & food services		52
Other services		51
Government & non NAICS		3
<b>Total</b>	<b>2,561</b>	<b>3,071</b>

Total  
Contribution  
of AG + Related  
Employment =  
3,071  
  
Accounts for  
1.9% of  
employment

# What These Numbers Mean: A Brief Explanation

---

- *Direct contribution* is \$207.4 million. This includes food and fiber production, processing and directly related manufacturing.
- *Total contribution* includes related sectors and sums to \$267.4 million. This includes the captured effects of farmers (direct source) buying supplies (seed, fertilizer, work boots) from local stores. These stores must increase their output to meet farmer demand.



# What These Numbers Mean: A Brief Explanation (continued)

---

- As local stores increase their output, they may demand more stock from local wholesalers (also in the Trade sector). Local wholesalers demand more from local manufacturers, thus increasing activity in the Manufacturing sector.
- Local stores also hire employees to assist farmers. They take home wages and buy groceries at the local store which increases demand there.





# Clayton County Food and Fiber Summary/Conclusions

---

- The total *economic contribution* of food and fiber production, processing and direct manufacturing is \$267.4 million.
- The total county *output* is \$26.6 billion.
- Thus, food and fiber (directly and indirectly) account for 1% of the total county output, considering the multiplier effects.



# Contact Information

---

Prepared by  
Sharon P. Kane, Sr. Public Service Associate, Economist

Center for Agribusiness & Economic Development  
Dr. Kent Wolfe, Director

*“Adding Value to Georgia's Agricultural Economy  
Through Research and Extension“*

*Check our website for more resources:  
[www.caed.uga.edu](http://www.caed.uga.edu)*



Center for Agribusiness  
and Economic Development  
*College of Agricultural & Environmental Sciences*  
UNIVERSITY OF GEORGIA