

The Economic Importance of Food and Fiber

A Spotlight on Jones County, Georgia

Prepared for:
Jones County Cooperative Extension

Prepared by:



Center for Agribusiness
and Economic Development

College of Agricultural & Environmental Sciences

UNIVERSITY OF GEORGIA

August 2017

Agriculture in Georgia

- Georgia's 2015 Farm Gate Value was \$13.8 billion. Adding the value of \$2.2 billion of landscape services increased the total agricultural production value to \$16.0 billion.
- Total food and fiber production and directly related businesses account for a \$74.9 billion *output contribution* to Georgia's \$917.6 billion economy.



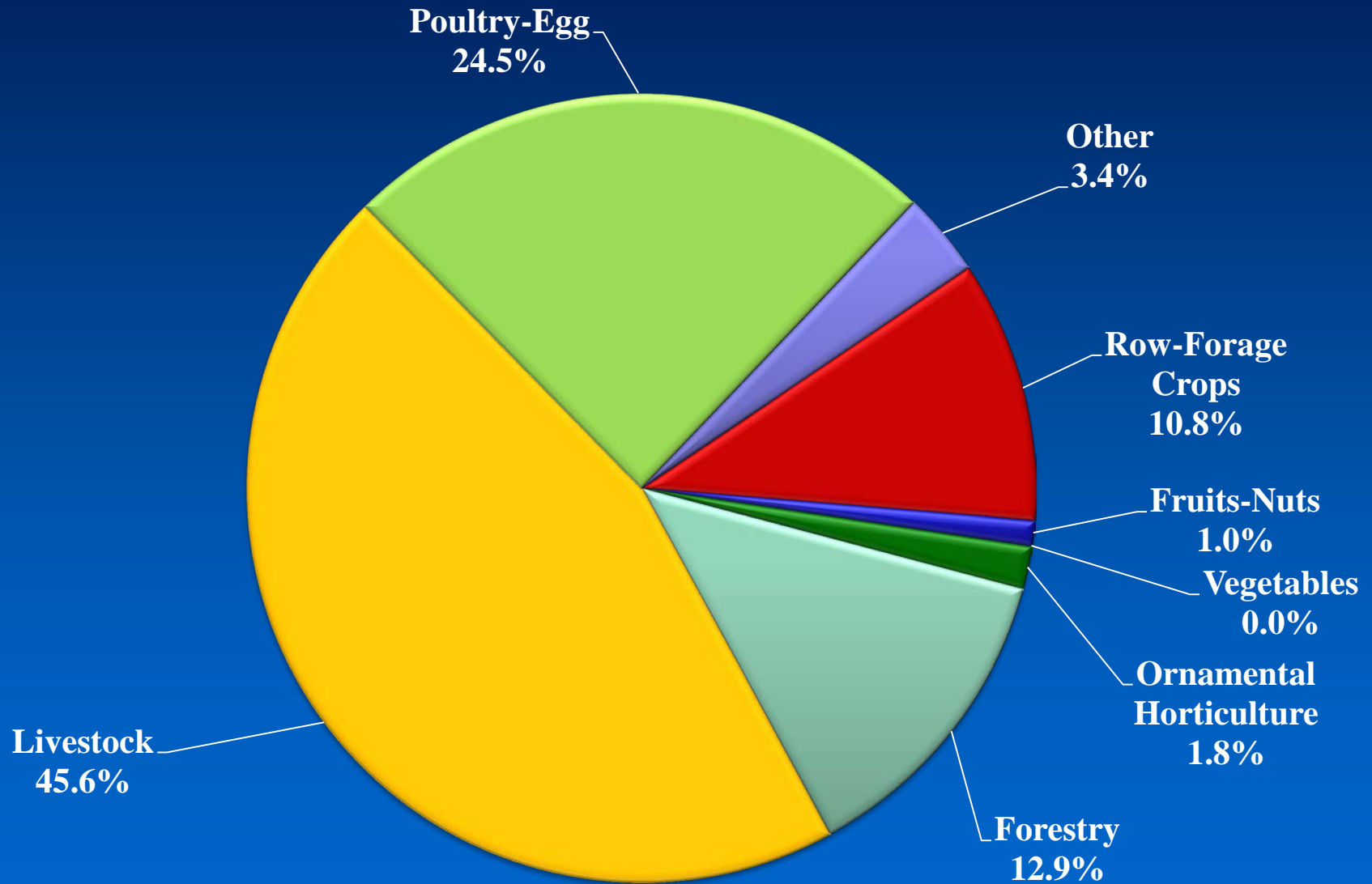
What We Know about Jones County

- 2015 Farm Gate Value in Jones Co. was \$19.95 million. Adding \$6.0 million of landscape services increased the total agricultural production value to \$26 million.
- The highest value commodity group was livestock production, representing 45.6% of the total agricultural production value.



Jones County

2015 Farm Gate Production Value



Examining the Contribution

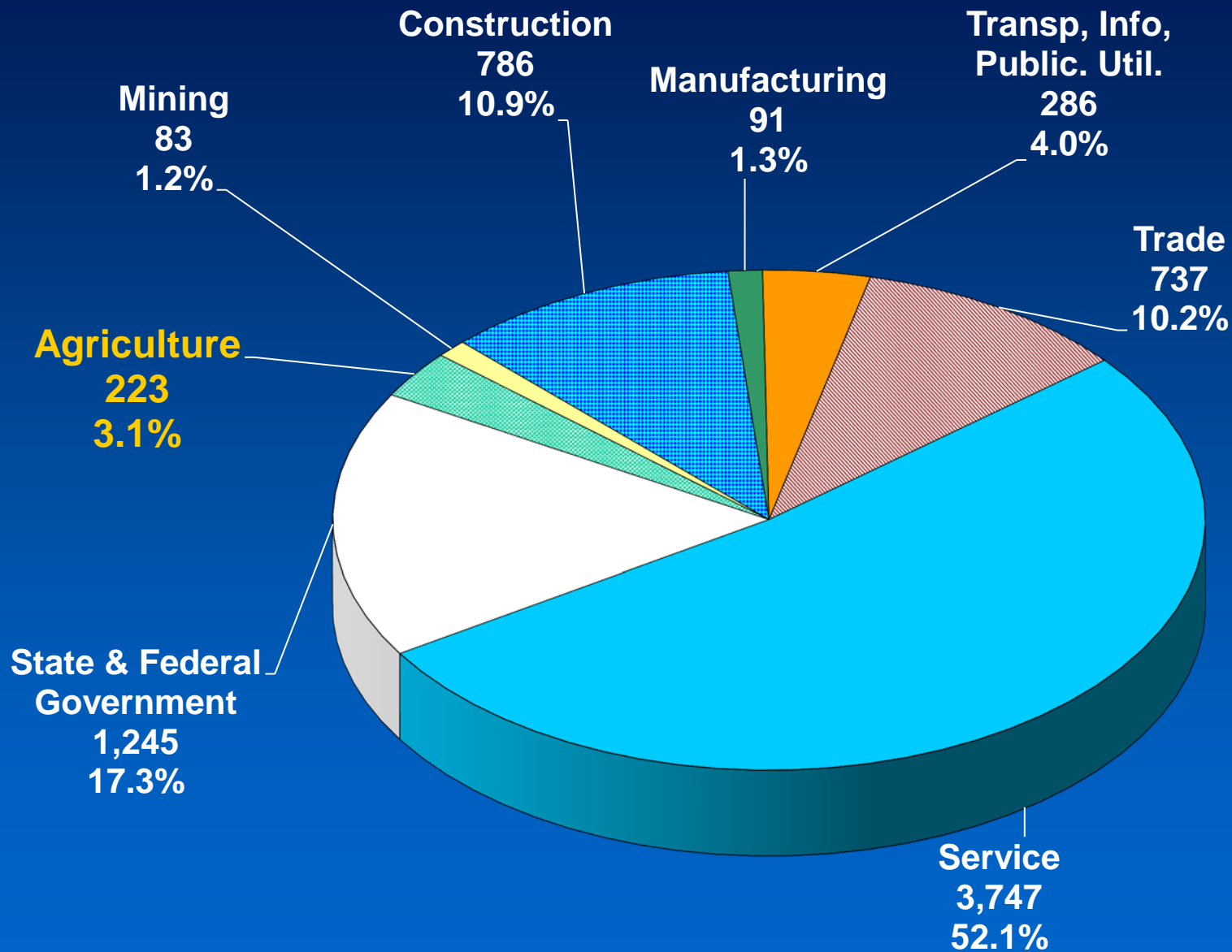
County Economy Modeled

- The Center for Agribusiness and Economic Development performed an analysis of the county's economy, focusing on the role of food and fiber.
- How much of the county's total current economic output comes from food and fiber production and directly related processing? (A Snapshot of the Economy)
- What is the total (direct and indirect) *Economic Contribution* of food and fiber production and directly related industries?



Jones County Employment

Total County Employment = 7,198



An Economic Snapshot of Jones County

- How much of Jones County's total economic output comes from food and fiber production?
- AG value alone of \$26 million-consisting of Farm Gate Value and landscape services comprises 3.3% of the county's economy.
- AG plus directly related businesses (ex. Ag Support Services, Processing, etc.) comprise 4.0% of the county's economy.



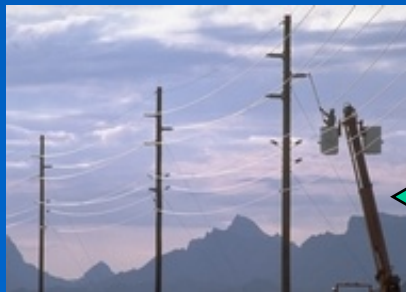
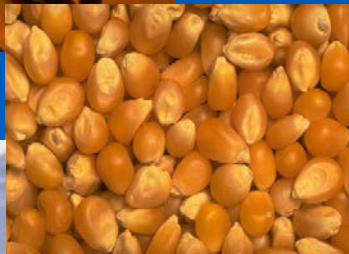
What is the Economic Contribution?

- What is the total (direct and indirect) *contribution* of food and fiber production and directly related industries?
- This scenario illustrates how other industries are affected by the presence of food and fiber in the county. The indirect contribution measures output created due to food and fiber production and processing in the county.



What Economic Contribution Means: A Brief Explanation

- The *contribution* numbers capture the ripple effects that food and fiber create in the county's economy. Many other sectors rely in part on the existence of food and fiber for sales.
- Further, agricultural commodities are sold to other sectors as the inputs to production.



Jones County

Agriculture *Economic Contribution*

Sector	Direct	Total
Ag + Landscape Services	\$25,973,562	\$25,973,562
Mining	\$0	\$14,085
Utilities	\$0	\$242,277
Construction	\$0	\$162,947
Manufacturing	\$0	\$11,982
Wholesale Trade	\$0	\$424,702
Retail trade	\$0	\$345,597
Transportation & Warehousing	\$0	\$564,239
Information	\$0	\$78,772
Finance & insurance	\$0	\$544,818
Real estate & rental	\$0	\$1,350,609
Professional- scientific & tech services	\$0	\$371,722
Management of companies	\$0	\$57,376
Administrative & waste services	\$0	\$116,551
Educational services	\$0	\$16,433
Health & social services	\$0	\$344,571
Arts-entertainment & recreation	\$0	\$28,239
Accommodation & food services	\$0	\$219,649
Other services	\$0	\$235,906
Government & non NAICS	\$0	\$26,856
TOTAL	\$25,973,562	\$31,130,893

**Total
 Contribution
 of Production
 AG = \$31.1
 million
 3.9% of total
 economy**

Jones County

Production Agriculture + Directly Related Industries Contribution

Sector	Direct	Total
Ag + Related Industries	\$29,402,200	\$29,402,200
Mining	\$0	\$14,675
Utilities	\$0	\$270,809
Construction	\$0	\$179,805
Other Manufacturing	\$0	\$12,900
Wholesale Trade	\$0	\$469,262
Retail trade	\$0	\$411,094
Transportation & Warehousing	\$0	\$626,618
Information	\$0	\$88,846
Finance & insurance	\$0	\$614,995
Real estate & rental	\$0	\$1,595,300
Professional- scientific & tech services	\$0	\$401,556
Management of companies	\$0	\$65,008
Administrative & waste services	\$0	\$127,349
Educational svcs	\$0	\$19,571
Health & social services	\$0	\$412,676
Arts- entertainment & recreation	\$0	\$33,296
Accommodation & food services	\$0	\$258,369
Other services	\$0	\$274,180
Government & non NAICS	\$0	\$30,111
Total	\$29,402,200	\$35,308,622

**Total
Contribution
of AG +
Related =
\$35.3 million
4.4% of total
economy**

Jones County

Production Agriculture + Directly Related Industries Employment *Contribution*

Sector	Direct	Total
Ag + Related Industries	575	575
Mining	0	0
Utilities	0	0
Construction	0	1
Manufacturing	0	0
Wholesale Trade	0	2
Retail trade	0	6
Transportation & Warehousing	0	4
Information	0	0
Finance & insurance	0	3
Real estate & rental	0	3
Professional- scientific & tech services	0	6
Management of companies	0	0
Administrative & waste services	0	4
Educational svcs	0	1
Health & social services	0	6
Arts- entertainment & recreation	0	1
Accommodation & food services	0	5
Other services	0	4
Government & non NAICS	0	0
Total	575	623

Total
Contribution
of AG + Related
Employment =
623
Accounts for
8.7% of
employment

What These Numbers Mean: A Brief Explanation

- *Direct contribution* is \$29.4 million. This includes food and fiber production, processing and directly related manufacturing.
- *Total contribution* includes related sectors and sums to \$35.3 million. This includes the captured effects of farmers (direct source) buying supplies (seed, fertilizer, work boots) from local stores. These stores must increase their output to meet farmer demand.



What These Numbers Mean: A Brief Explanation (continued)

- As local stores increase their output, they may demand more stock from local wholesalers (also in the Trade sector). Local wholesalers demand more from local manufacturers, thus increasing activity in the Manufacturing sector.
- Local stores also hire employees to assist farmers. They take home wages and buy groceries at the local store which increases demand there.



Jones County Food and Fiber Summary

- The total *economic contribution* of food and fiber production, processing and direct manufacturing is \$35.3 million.
- The total county *output* is \$795.2 million.
- Thus, food and fiber (directly and indirectly) account for 4.4% of the total county output, considering the multiplier effects from direct and related industries.



Contact Information

Prepared by

Sharon P. Kane, Sr. Public Service Associate, Economist

Center for Agribusiness & Economic Development

Dr. Kent Wolfe, Director

*“Adding Value to Georgia's Agricultural Economy
Through Research and Extension“*

Check our website for more resources:

www.caed.uga.edu



Center for Agribusiness
and Economic Development
College of Agricultural & Environmental Sciences
UNIVERSITY OF GEORGIA