

# The Economic Importance of Food and Fiber

A Spotlight on Wayne County, Georgia

Prepared by:



Center for Agribusiness  
and Economic Development

*College of Agricultural & Environmental Sciences*

UNIVERSITY OF GEORGIA

December 2017

# Agriculture in Georgia

---

- Georgia's 2015 Farm Gate Value was \$13.8 billion. Adding the value of \$2.2 billion of landscape services increased the total agricultural production value to \$16.0 billion.
- Total food and fiber production and directly related businesses account for a \$74.9 billion *output contribution* to Georgia's \$917.6 billion economy.



# What We Know about Wayne County

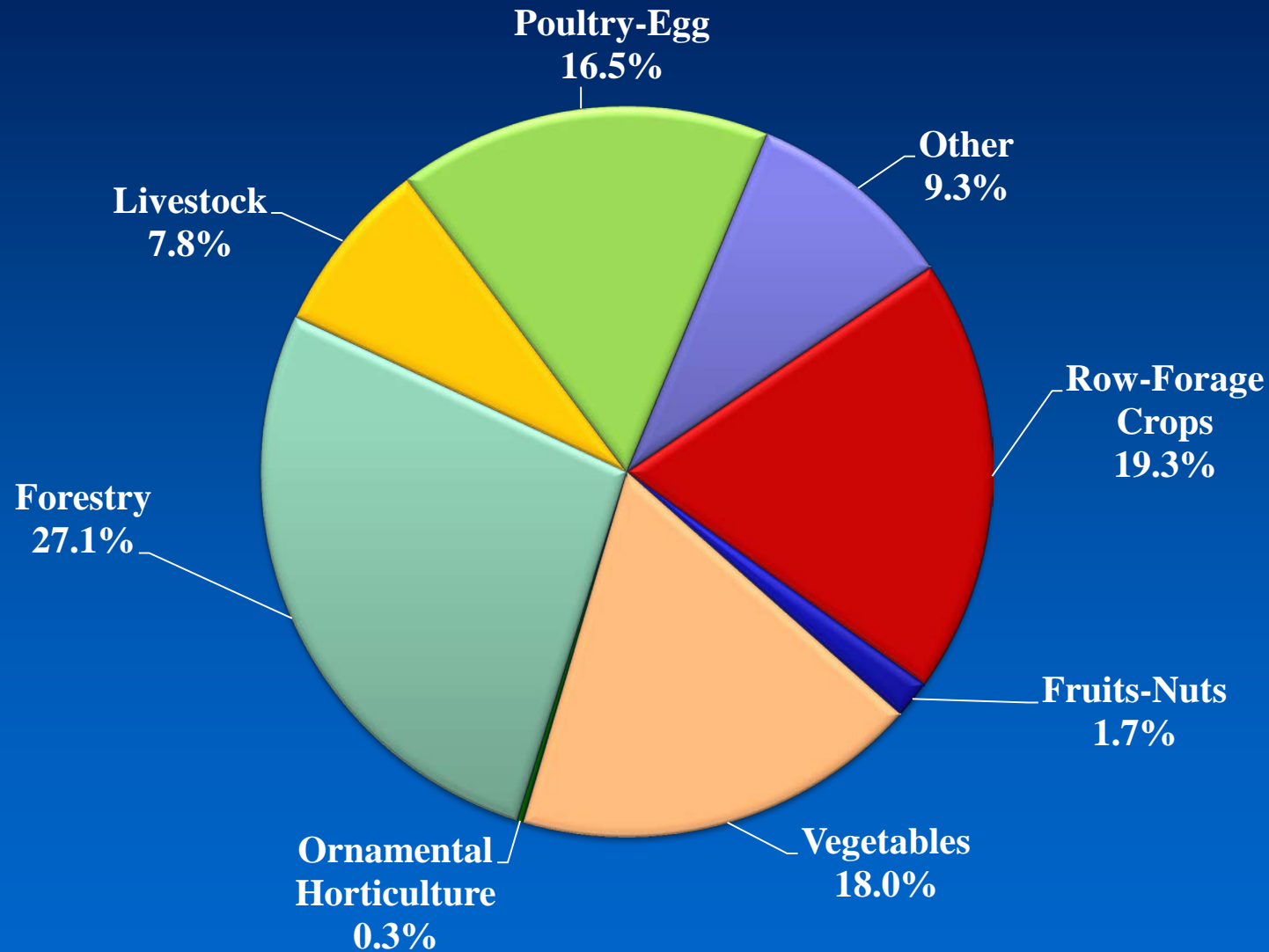
---

- 2015 Farm Gate Value in Wayne Co. was \$98.2 million. Adding \$4.2 million of landscape services increased the total agricultural production value to \$102.4 million.
- The highest value commodity group was forestry, representing 27.1% of the total Farm Gate production value.



# Wayne County

## 2015 Farm Gate Production Value



# Examining the Economic Contribution County Economy Modeled

---

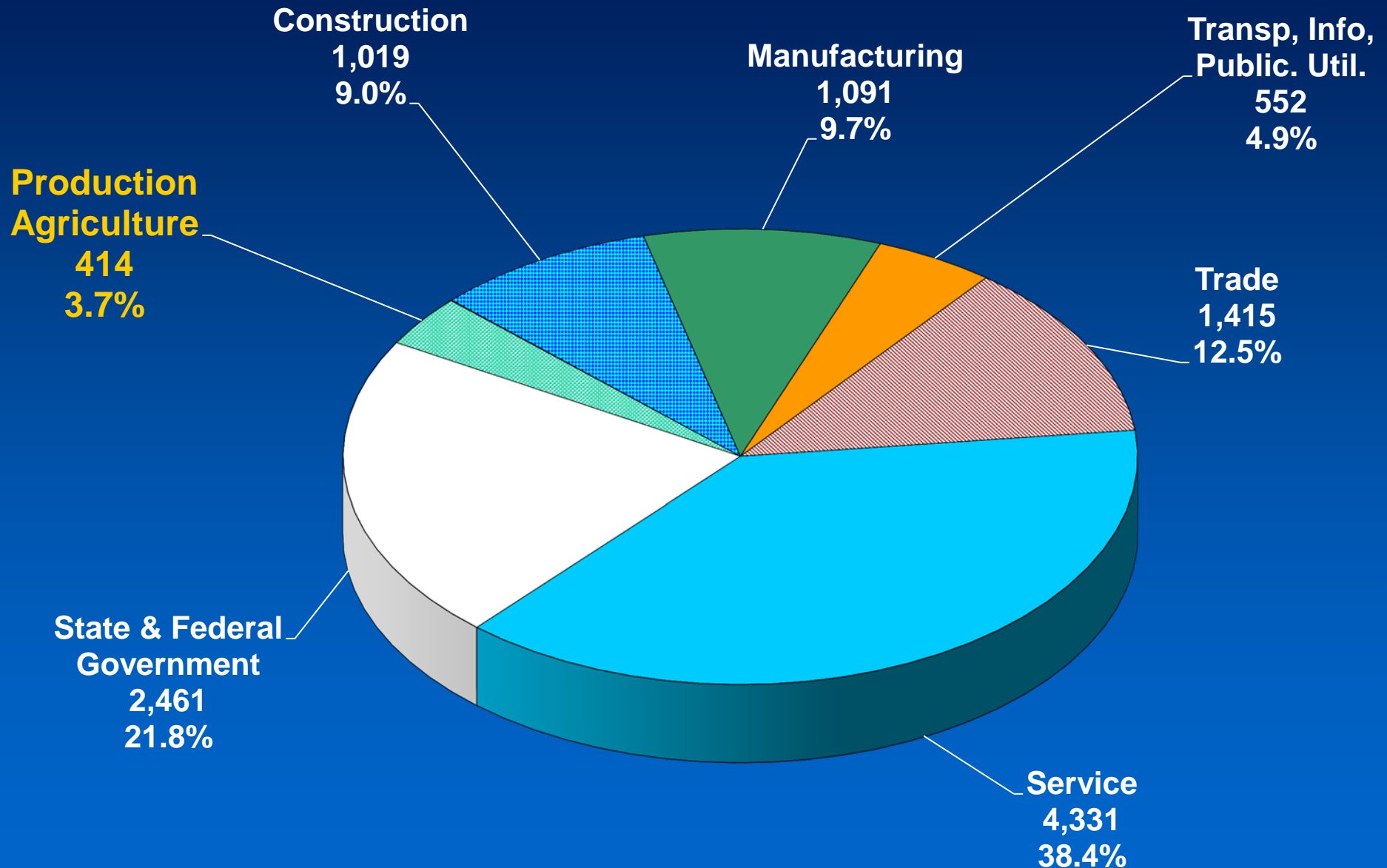
- The Center for Agribusiness and Economic Development performed an analysis of the county's economy, focusing on the role of food and fiber.
- How much of the county's total current economic output comes from food and fiber production and directly related processing? (A Snapshot of the Economy)
- What is the total (direct and indirect) *Economic Contribution* of food and fiber production and directly related industries?





# Wayne County Employment

Total County Employment = 11,287



Primary data source: IMPLAN data, compiled by Center for Agribusiness & Economic Development, UGA

# An Economic Snapshot of Wayne County

---

- How much of Wayne County's total economic output comes from food and fiber production and related industries?
- AG value alone of \$102.4 million-consisting of Farm Gate Value and landscape services comprises 5.9% of the county's economy.
- AG plus directly related businesses (ex. Ag Support Services, Processing, food & fiber manufacturing, etc.) comprise 35.9% of the county's economy.



# What is the Economic Contribution?

---

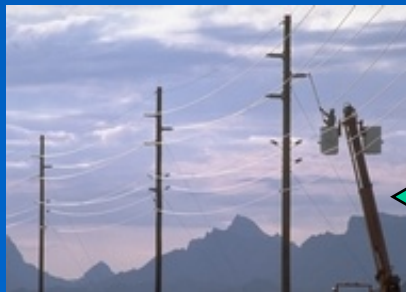
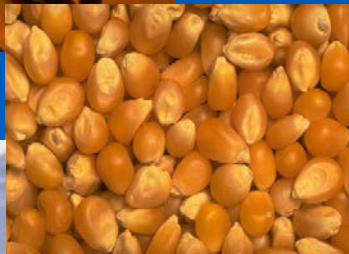
- What is the total (direct and indirect) *economic contribution* of food and fiber production and directly related industries?
- This scenario illustrates how other industries are affected by the presence of food and fiber in the county and quantifies their economic role.
- The indirect contribution measures output created by food and fiber production, processing and spending by employees of those industries





# What Economic Contribution Means: A Brief Explanation

- The *contribution* numbers capture the ripple effects that food and fiber create in the county's economy. Many other sectors rely in part on the existence of food and fiber for sales.
- Further, agricultural commodities are sold to other sectors as the inputs to production.



# Wayne County

## Agriculture *Economic Contribution*

Sector	Direct	Total
<b>Ag + Landscape Services</b>	<b>102,360,008</b>	<b>102,360,008</b>
Mining	0	1,554
Utilities	0	1,042,565
Construction	0	883,068
Manufacturing	0	25,015
Wholesale Trade	0	609,264
Retail trade	0	2,786,178
Transportation & Warehousing	0	872,349
Information	0	1,890,000
Finance & insurance	0	2,583,778
Real estate & rental	0	6,113,871
Professional- scientific & tech services	0	1,076,727
Management of companies	0	16,993
Administrative & waste services	0	305,564
Educational services	0	102,429
Health & social services	0	3,032,013
Arts-entertainment & recreation	0	57,713
Accommodation & food services	0	1,746,490
Other services	0	1,098,351
Government & non NAICS	0	224,757
<b>TOTAL</b>	<b>102,360,008</b>	<b>126,828,686</b>

**Total  
Contribution  
of Production  
AG = \$126.8  
million  
7.3% of total  
economy**

# Wayne County

## Production Agriculture + Directly Related Industries Contribution

Sector	Direct	Total
<b>Ag + Related Industries</b>	621,888,546	621,888,546
Mining	0	21,633
Utilities	0	18,304,620
Construction	0	9,047,332
Other Manufacturing	0	227,694
Wholesale Trade	0	6,297,995
Retail trade	0	7,892,184
Transportation & Warehousing	0	20,693,033
Information	0	7,817,482
Finance & insurance	0	12,727,979
Real estate & rental	0	19,422,703
Professional- scientific & tech services	0	8,783,655
Management of companies	0	683,852
Administrative & waste services	0	4,075,772
Educational svcs	0	248,836
Health & social services	0	7,610,135
Arts- entertainment & recreation	0	549,884
Accommodation & food services	0	6,411,109
Other services	0	4,689,269
Government & non NAICS	0	1,424,200
<b>Total</b>	621,888,546	758,817,912

**Total  
Contribution  
of AG +  
Related =  
\$758.8 million  
43.8% of total  
economy**

# Wayne County

## Production Agriculture + Directly Related Industries Employment *Contribution*

Sector	Direct	Total
<b>Ag + Related Industries</b>	2,150	2,150
Mining	0	0
Utilities	0	18
Construction	0	60
Manufacturing	0	1
Wholesale Trade	0	36
Retail trade	0	115
Transportation & Warehousing	0	96
Information	0	13
Finance & insurance	0	78
Real estate & rental	0	39
Professional- scientific & tech services	0	161
Management of companies	0	7
Administrative & waste services	0	163
Educational services	0	12
Health & social services	0	103
Arts- entertainment & recreation	0	31
Accommodation & food services	0	116
Other services	0	63
Government & non NAICS	0	23
<b>Total</b>	2,150	3,287

Total  
Contribution  
of AG + Related  
Employment =  
3,287  
Accounts for  
29.1% of  
employment

# What These Numbers Mean: A Brief Explanation

- ***Direct contribution*** is \$621.9 million. This includes food and fiber production, processing and directly related manufacturing.
- ***Total contribution*** includes related sectors and sums to \$758.8 million. This includes the captured effects of farmers (direct source) buying supplies (seed, fertilizer, work boots) from local stores. These stores must increase their output to meet demand.



# What These Numbers Mean: A Brief Explanation (continued)

---

- As local stores increase their output, they may demand more stock from local wholesalers (also in the Trade sector). Local wholesalers demand more from local manufacturers, thus increasing activity in the Manufacturing sector.
- Local stores also hire employees to assist food and fiber and related industries. They take home wages and buy groceries at local stores, which increases demand there.





# Wayne County Food and Fiber Summary

---

- The total *economic contribution* of food and fiber production, processing and direct manufacturing is \$758.8 million.
- The total county *output* is \$1.7 billion.
- Thus, food and fiber industries (directly and indirectly) account for *43.8%* of the total county output, considering the multiplier effects from direct and related industries.



# Contact Information

---

Prepared by

Sharon P. Kane, Sr. Public Service Associate, Economist

Center for Agribusiness & Economic Development

Dr. Kent Wolfe, Director

*“Adding Value to Georgia's Agricultural Economy  
Through Research and Extension“*

*Check our website for more resources:*

*[www.caed.uga.edu](http://www.caed.uga.edu)*



Center for Agribusiness  
and Economic Development  
*College of Agricultural & Environmental Sciences*  
UNIVERSITY OF GEORGIA